

The
VOLLMAN
COMPANY

NEW LISTING:

930 F STREET
SACRAMENTO, CA 95814



\$930,000

FOR SALE OR LEASE -OWNER USER-

THE PROPERTY

Originally a Bank, later converted to law offices in 2001. The interior has inlaid wood, built in bookshelves, desks, and cabinets. The Workspace has been modified for contemporary use, with varied and collaborative designs; all timeless.

930 F Street has convenient access to Interstate 5 and Highway 160 . Positioned on the corner of F and 10th, and strategically located next to the Clerks Office, the Sacramento Public Law Library, the Courthouse, and State Capital. A one-of-a-kind property, that is not to be missed.



The Vollman Company
11500 Sunrise Gold Circle, Suite E
Rancho Cordova, CA 95742
www.thevollmancompany.com

Ian A. Forner
916.996.4809
iforner@thevollmancompany.com
Cal DRE# 01967116



930 F STREET
SACRAMENTO, CA 95814

Ian A. Forner
916.996.4809
lforner@thevollmancompany.com
Cal DRE# 01967116

SPECIFICATIONS

Property Size: \pm 2,100 SF

Parcel Size: \pm 3,200 SF

Storage: \pm 150 SF

Gated Parking: 6

Spaces

Gated Entrance

APN: 002-0151-010

Zoning: OB-SPD



FOUR SPACIOUS OFFICES



LARGE ENTRANCE/WAITING ROOM



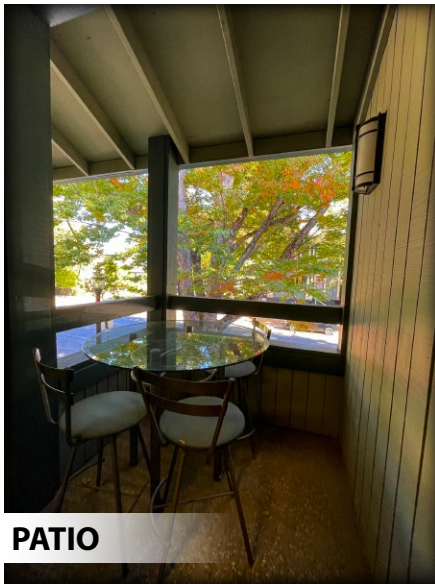
CONFERENCE ROOM

The
VOLLMAN
COMPANY

The Vollman Company
11500 Sunrise Gold Circle, Suite E | Rancho Cordova, CA 95742
Ian A. Forner | 916.996.4809
www.thevollmancompany.com

930 F STREET SACRAMENTO, CA

Ian A. Forner
916.996.4809
lforner@thevollmancompany.com
Cal DRE# 01967116



PATIO



KITCHEN



NEWLY FURNISHED
BATHROOMS

FLOOR PLAN

KEY-SECOND FLOOR:

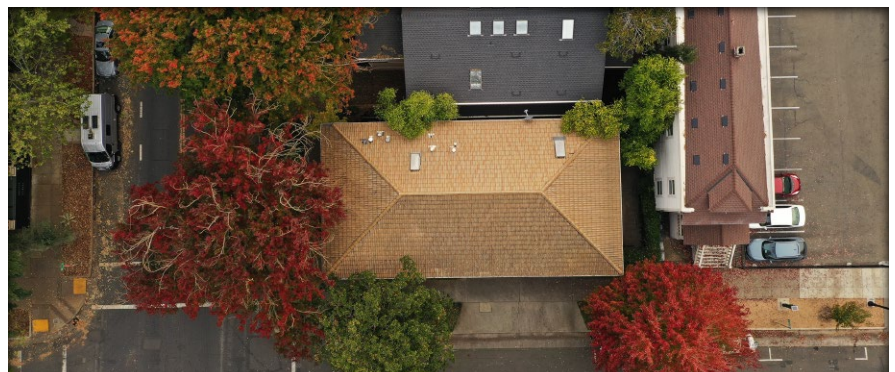
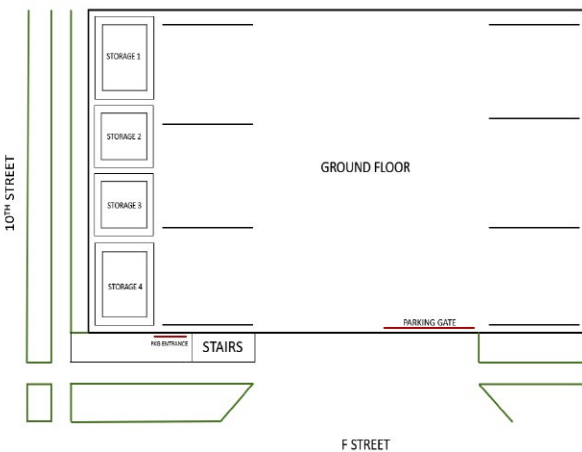
Office 1 - (14' x 12') 168 SF

Office 2 - (15' x 11') 165 SF

Office 3 - (14' x 10') 140 SF

Office 4 - (14' x 12') 168 SF

Conference Room - (17' x 11') 187 SF



The
VOLLMAN
COMPANY

The Vollman Company
11500 Sunrise Gold Circle, Suite E | Rancho Cordova, CA 95742
Ian A. Forner | 916.996.4809
www.thevollmancompany.com

930 F STREET
SACRAMENTO, CA

Ian A. Forner
916.996.4809
lforner@thevollmancompany.com
Cal DRE# 01967116



ABOUT THE AREA

The Sacramento Metropolitan Area has an estimated 2 million plus residents and spans seven different counties. The City of Sacramento shows fantastic economic health, with large increases in the healthcare, education and technology sectors. Companies and individuals are being drawn to Sacramento's lower cost of living, high quality of life and desirable real estate. Jobs and opportunities fuel the residential migration from The Bay and its surrounding areas and the ideal location aids to growth in the city's expanding infrastructure. From locally owned farm-to-fork restaurants to world class entertainment in music and sports, Sacramento is the perfect blend of possibility and opportunity.

The
VOLLMAN
COMPANY

The Vollman Company
11500 Sunrise Gold Circle, Suite E | Rancho Cordova, CA 95742
Ian A. Forner | 916.996.4809
www.thevollmancompany.com