

20 Acre MDR Land Development Potential Lincoln, CA - Village 7 S.P.A.

2725 & 2755 Moore
Road, Lincoln, CA
95648

APN: 021-283-007
9.7 acres

APN: 021-283-009
10.58 acres

Proposed Land
Use: Medium
Density Residential
(MDR)

Both Parcels are a
part of Planned
Village 7 S.P.A.
City of Lincoln

LENDER OWNED!
PRICE
REDUCTION!!



For more information:
Dan Mincher
916-833-3763

dmincher@thevollmancompany.com

20 Acre MDR Land Development Potential Lincoln, CA - Village 7 S.P. A.

SITE SUMMARY

SUBJECT: 2 Parcels of Land Planned for Medium Density Housing

LOCATION: 2725 & 2755 Moore Road, Lincoln, CA
SW corner at the proposed westerly extension of Ferrari Ranch Road and Moore Road.

➤ APN: 021-283-007 - 9.7 acres and 021-283-009 - 10.58 acres

LOT DESCRIPTION: 2 rectangular lots on Moore Road frontage mostly level.

LAND USE: Low & Medium Density Residential (VLDR & VMDR)
See Plan details at Lincolncalifornia.gov/city-hall/departments-divisions/community-development/planning

PRICE: 9.7 acres - \$2,800,000 and 10.58 acres - \$2,895,000

Flood Zone: X

20± acres of Residential Development Land in the Western area of Lincoln. The property is next to the Nader Ranch planned for development by the Lewis Group. Prime development opportunity in Village 7 on proposed Ferrari Ranch Road extension.

For more information:

Dan Mincher
916-833-3763

dmincher@thevollmancompany.com



The Vollman Company
Commercial Real Estate Brokerage
11500 Sunrise Gold Circle, Suite E
Rancho Cordova, CA 95742
www.thevollmancompany.com

License # 02091276



Figure 4-1: Land Use Plan

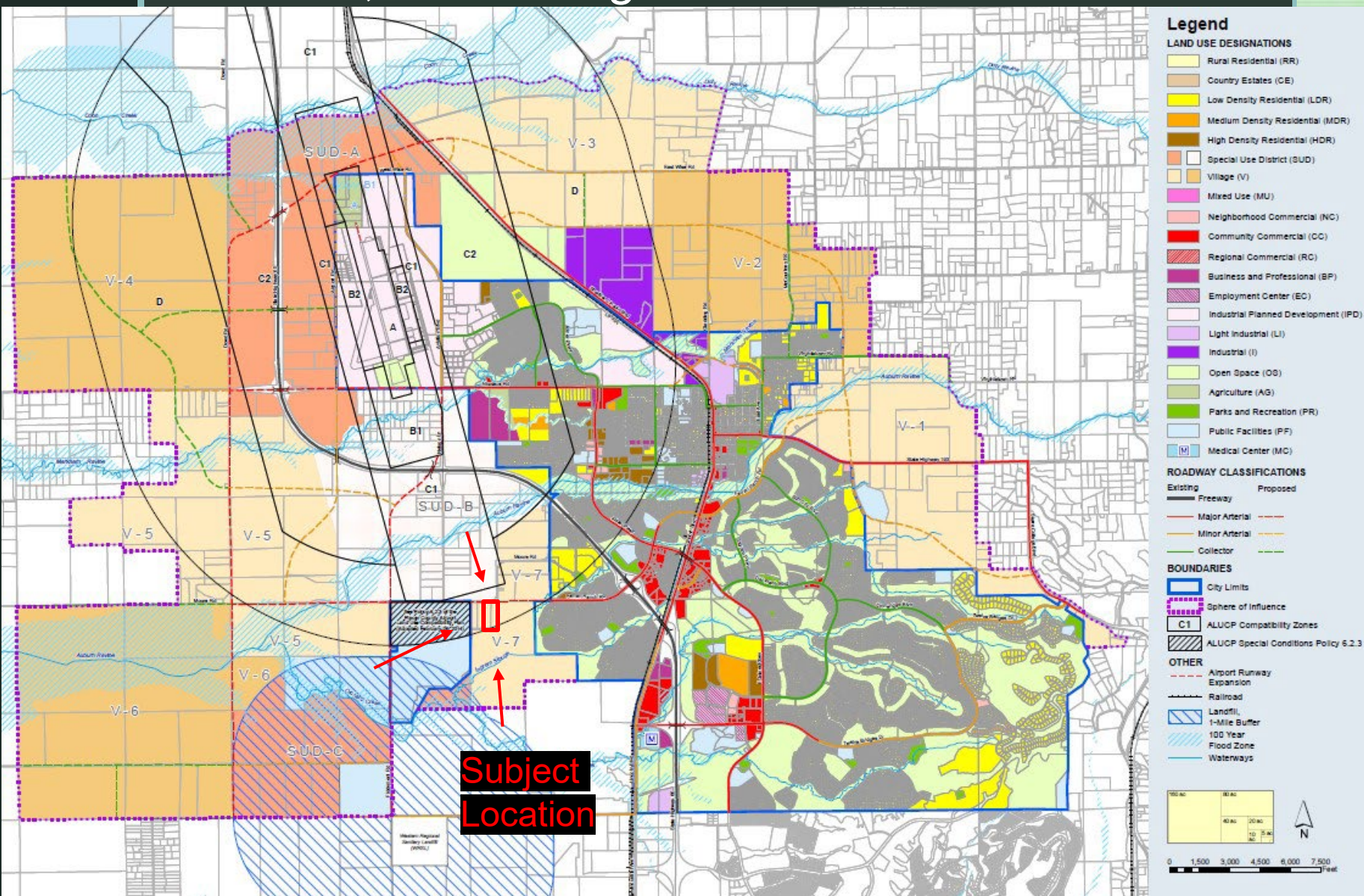
20 Acres MDR Land Development Potential Lincoln, CA Village 7 S.P.A.

Land Use Plan

For more information:
Dan Mincher
916-833-3763

dmincher@thevollmancompany.com

20 Acre MDR Land Development Potential Lincoln, CA - Village 7 S.P. A.



20 Acre MDR Land Development Potential Lincoln, CA - Village 7 S.P.A.

