

The
VOLLMAN
COMPANY

License # 02091276

DEVELOPMENT OPPORTUNITY SENIOR CARE FACILITY 2230 Edison Avenue, Sacramento



- Plans nearing approval
- Owner seeks JV or other structure to complete the project
- Will consider sale

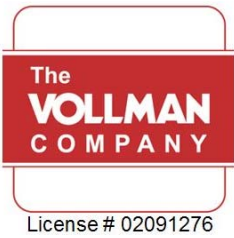
PRICE: Negotiable - Contact Broker to review plans, work product, etc.

The
VOLLMAN
COMPANY

License # 02091276

The Vollman Company
Commercial Real Estate Brokerage
1900 Point West Way, Suite 161
Sacramento, CA 95815
www.thevollmancompany.com

For More Information:
DAN MINCHER, CCIM
Managing Broker
916-833-3763 / 916-929-2000
dmincher@thevollmancompany.com



DEVELOPMENT OPPORTUNITY SENIOR CARE FACILITY 2230 Edison Avenue, Sacramento

SITE SUMMARY

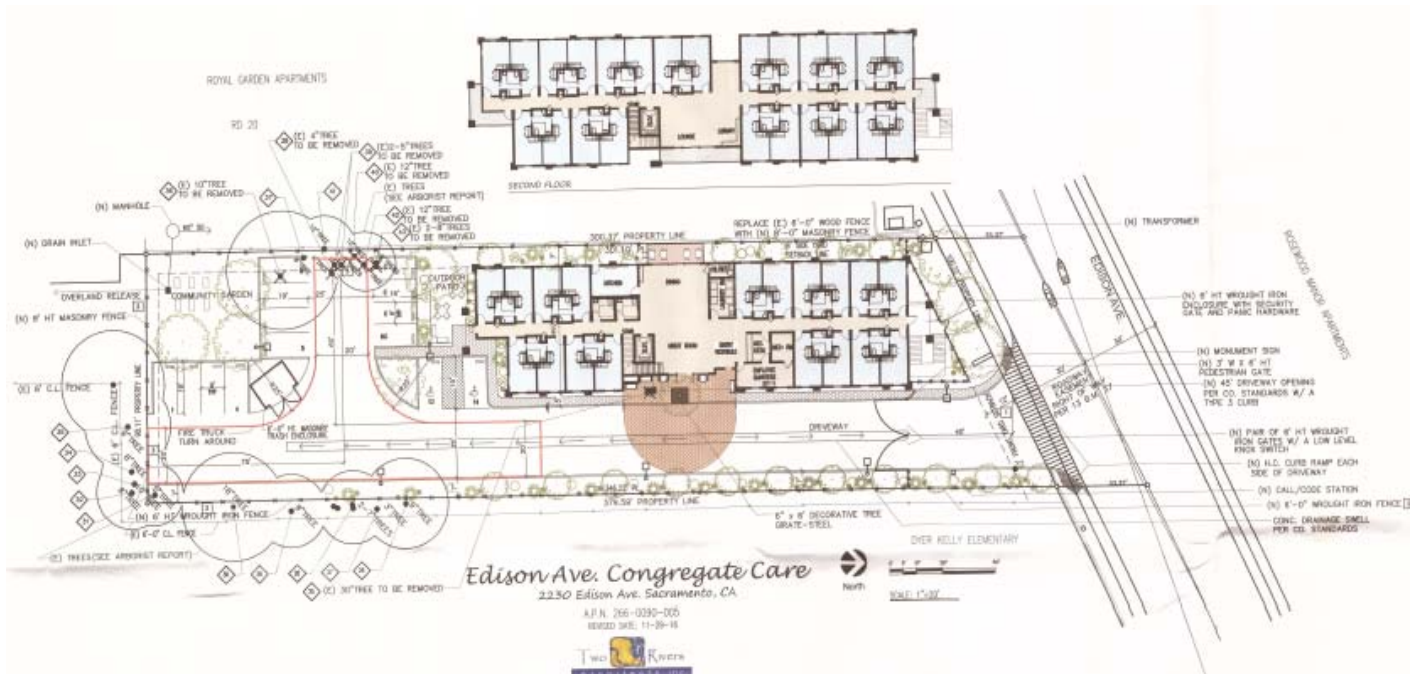
SUBJECT: Edison Avenue Congregate Care

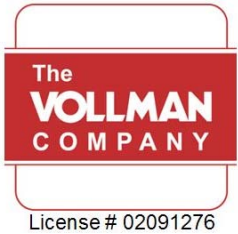
LOCATION: 2230 Edison Avenue, Sacramento, CA 95821

APN: 266-0090-005 - 0.659 acres

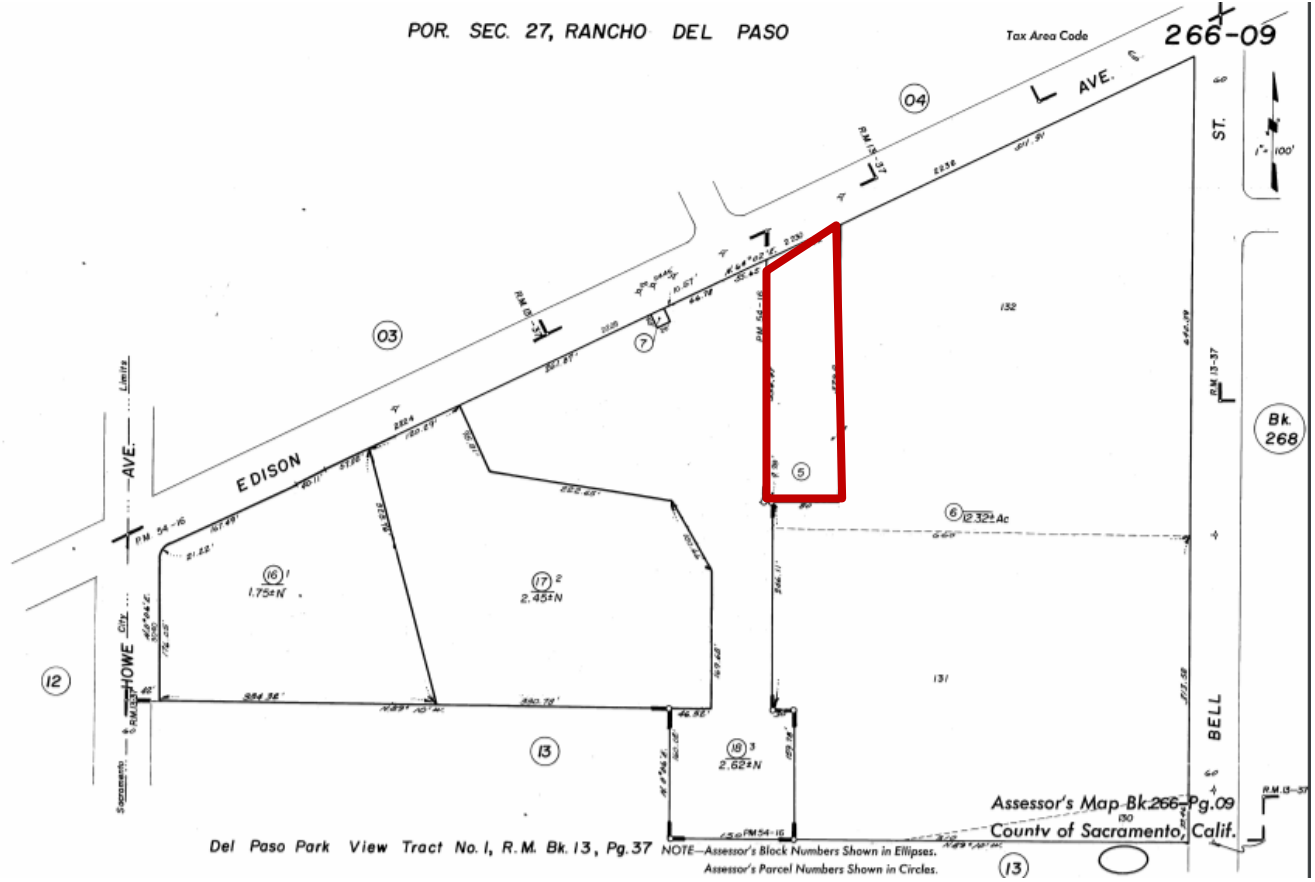
LOT DESCRIPTION: South side Edison Avenue near Truax Court, adjacent Dyer-Kelly Elementary

ZONING: RD-20





DEVELOPMENT OPPORTUNITY SENIOR CARE FACILITY 2230 Edison Avenue, Sacramento



Del Paso Park View Tract No. 1, R.M. Bk. 13, Pg. 37 NOTE—Assessor's Block Numbers Shown in Ellipses.
Assessor's Parcel Numbers Shown in Circles.



1 Revised South Elevation
SCALE: 1/8" = 1'-0"



2 Revised East Elevation
SCALE: 1/8" = 1'-0"



3 Revised North Elevation
SCALE: 1/8" = 1'-0"



4 Revised West Elevation
SCALE: 1/8" = 1'-0"

Edison Ave. Congregate Care
2230 Edison Ave. Sacramento, CA
11-29-16



- Key Notes:
- Cement board siding - SW 6156
 - Board & batten siding - SW 6157
 - Stucco - SW 6154
 - Stone columns - El Dorado Stone Mountain Lodge
 - GAF Timberline HD Shingles - Barkwood
 - Black Powder Coated Wrought Iron Fence not shown for Clarity