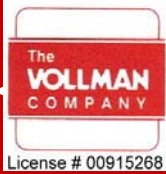


FOR LEASE FREEWAY CLOSE WAREHOUSE

11290 Sunrise Gold Circle, Rancho Cordova, CA 95742

**Suite K - 2,100 sf including
328 sf of office/restroom and
1,772 sf of warehouse
\$1,370.20/month - Gross
(\$.65psf blended) Including CAM**

**Office - \$.90psf
Warehouse - \$.50psf
CAM - \$.09psf**

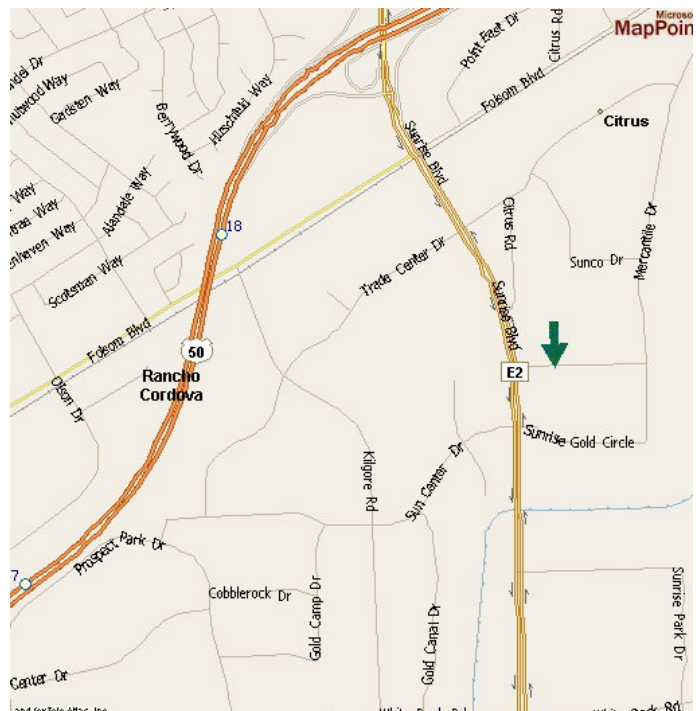


License # 00915268

THE VOLLMAN COMPANY, INC.
COMMERCIAL REAL ESTATE BROKERAGE
1900 POINT WEST WAY, SUITE 161
SACRAMENTO, CA 95815-4706
916/929-2000 FAX 916/929-7857
www.thevollmancompany.com

Features:

**12' x 12' Roll-Up Door
14' x 16' Clear Height
Ample Parking
Easy Access
100 amps/208 Volt 3 Phase
Power
Front Loading Unit**



FOR FURTHER INFORMATION, CONTACT:

Dennis Vollman - dvollman@thevollmancompany.com

Alex Byrd - alexbyrd@thevollmancompany.com

LuAnn Henderson- lhenderson@thevollmancompany.com

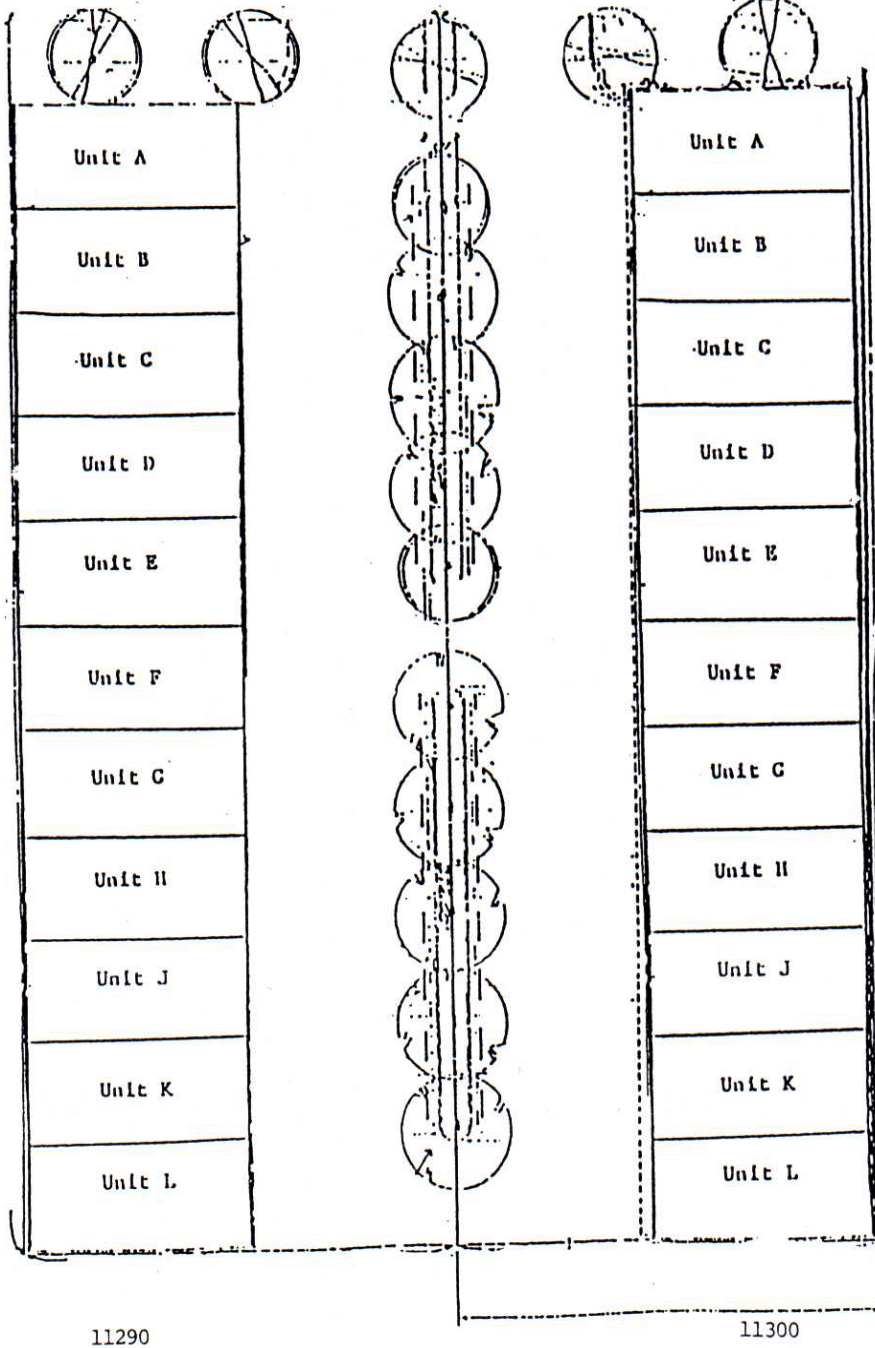
SUNRISE GOLD CIRCLE

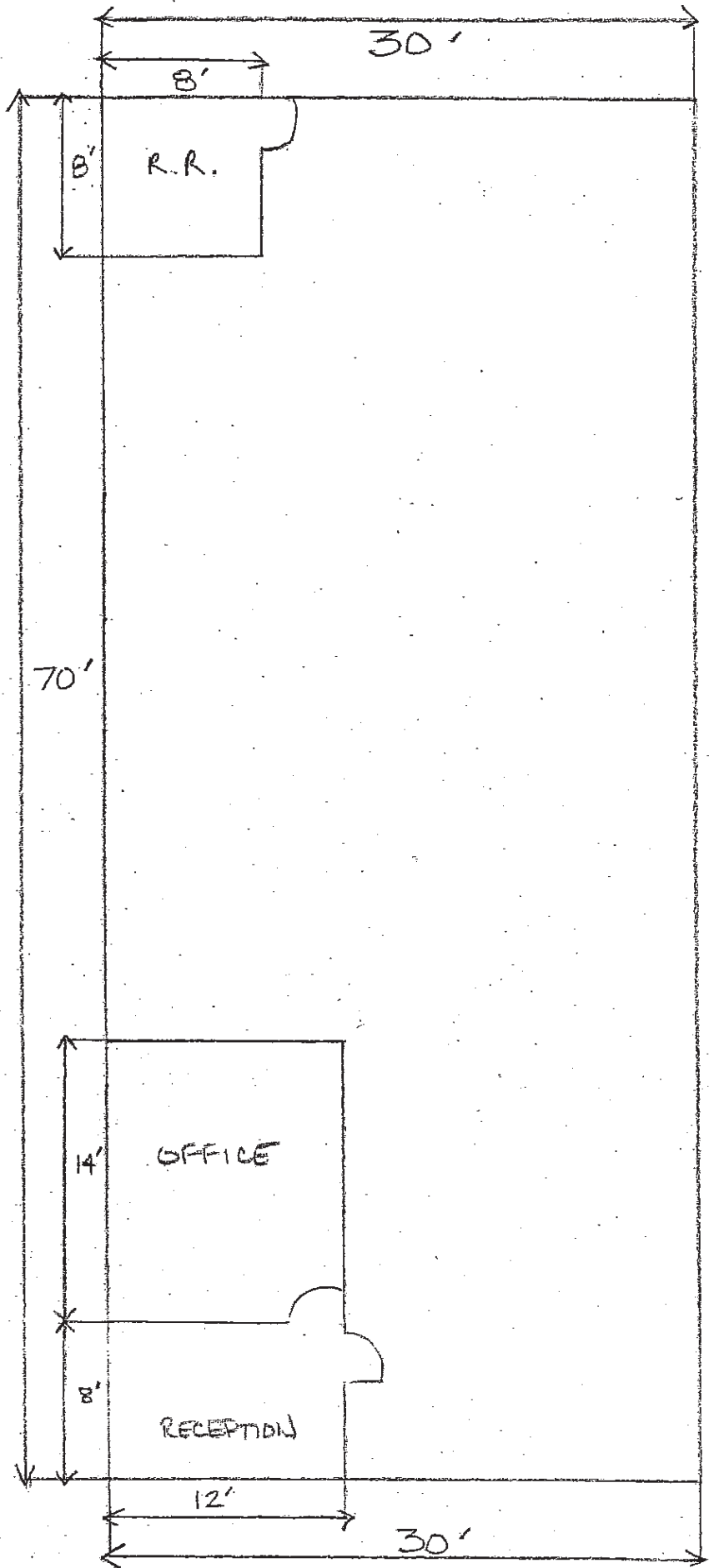
11290

11300

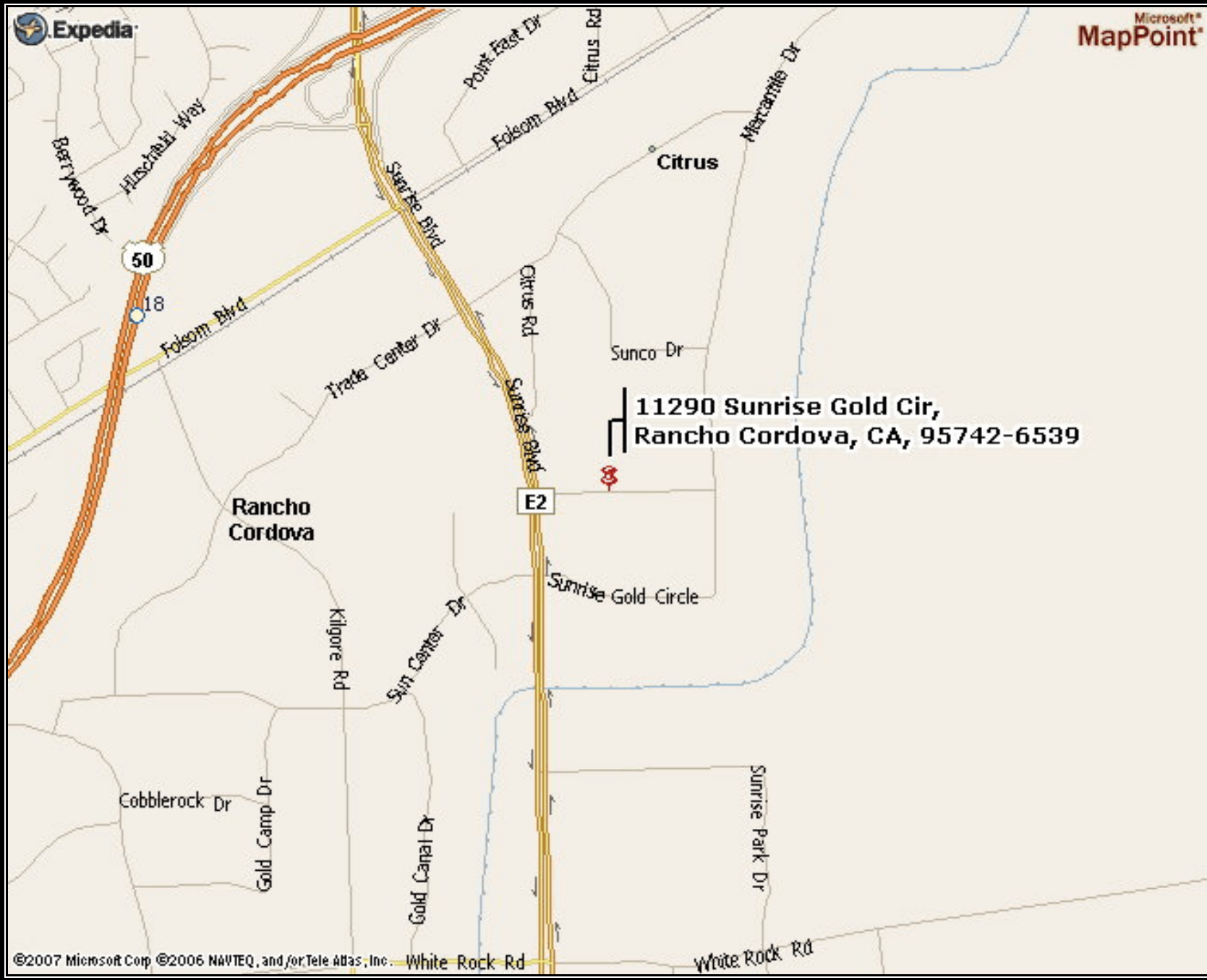
11290 Sunrise Gold Circle

11300 Sunrise Gold Circle





11290
SUNRISE GOLD CIRCLE
SUITE K



11290 Sunrise Gold Cir,
Rancho Cordova, CA, 95742-6539