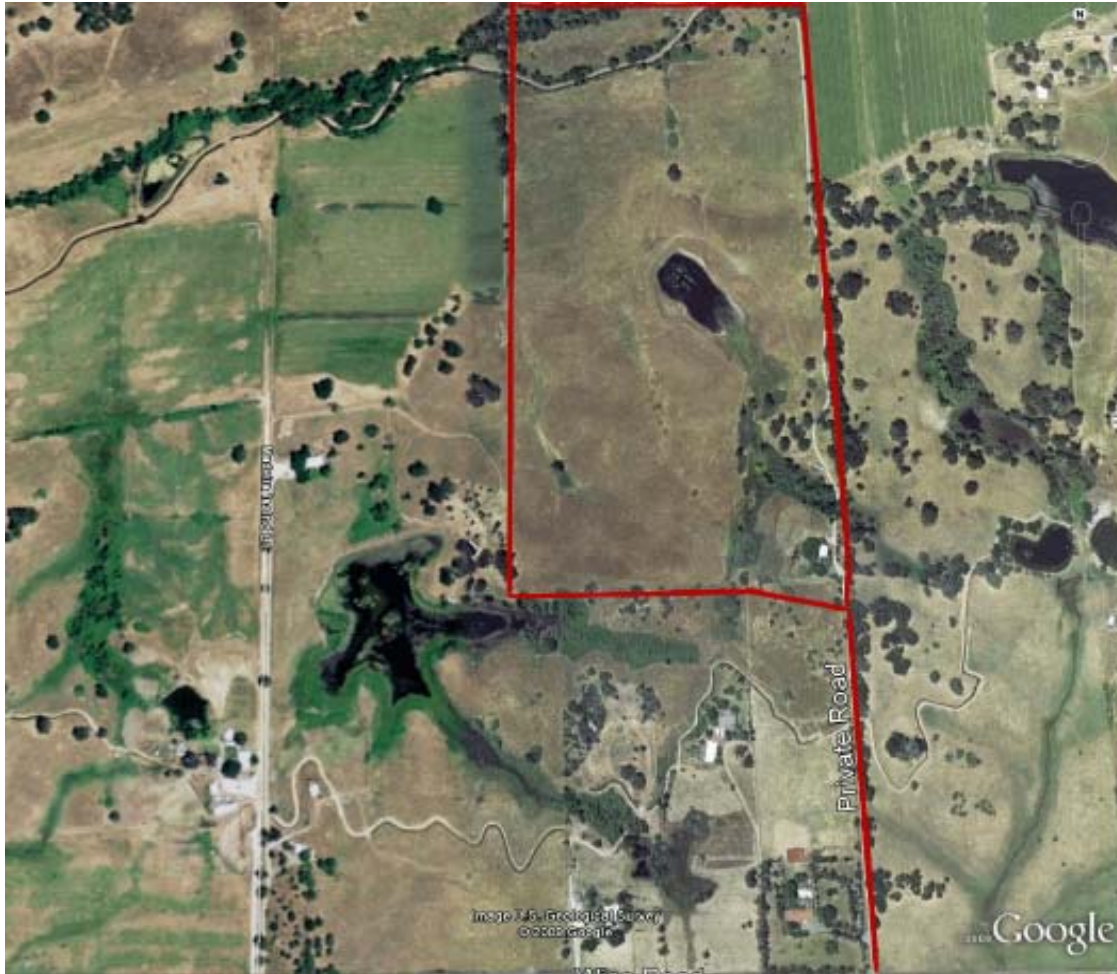


License # 00915268

# 60.4 acres Approved Tentative Map Wise Road, Lincoln, CA



APN: 020-167-031

60.4 acres off Wise Road between McCourtney and Crosby Herold

Zoning: F-B-X

Tentative Map for Four Parcels with a New Road to Parcels

Lender Owned!



License # 00915268

**THE VOLLMAN COMPANY, INC.**  
COMMERCIAL REAL ESTATE BROKERAGE  
1900 POINT WEST WAY, SUITE 161  
SACRAMENTO, CA 95815-4706  
916/929-2000 FAX 916/929-7857  
[www.thevollmancompany.com](http://www.thevollmancompany.com)

**For More Information:**  
**BILL GEORGE**  
916-929-2000  
[bgeorge@thevollmancompany.com](mailto:bgeorge@thevollmancompany.com)



# 60.4 acres Approved Tentative Map Wise Road, Lincoln, CA

## SITE SUMMARY

**SUBJECT:** 60 acres with a house (1,664 sq. ft.) with an approved tentative map to split the property into 3-10 acre and 1-30 acre parcels. The house is on one of the potential 10 acre parcels

**LOCATION:** 1663 Wise Road, Lincoln, CA 95648  
Just minutes from Old Lincoln near Crosby Herold Road

**APN:** 020-167-031

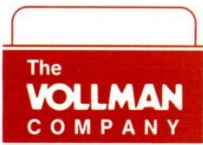
**LOT DESCRIPTION:** 60+ acres accessed by a new road just off Wise Rd

**ZONING:** F-B-X

**PRICE:** \$2,490,000 All Cash or Terms Acceptable to Seller

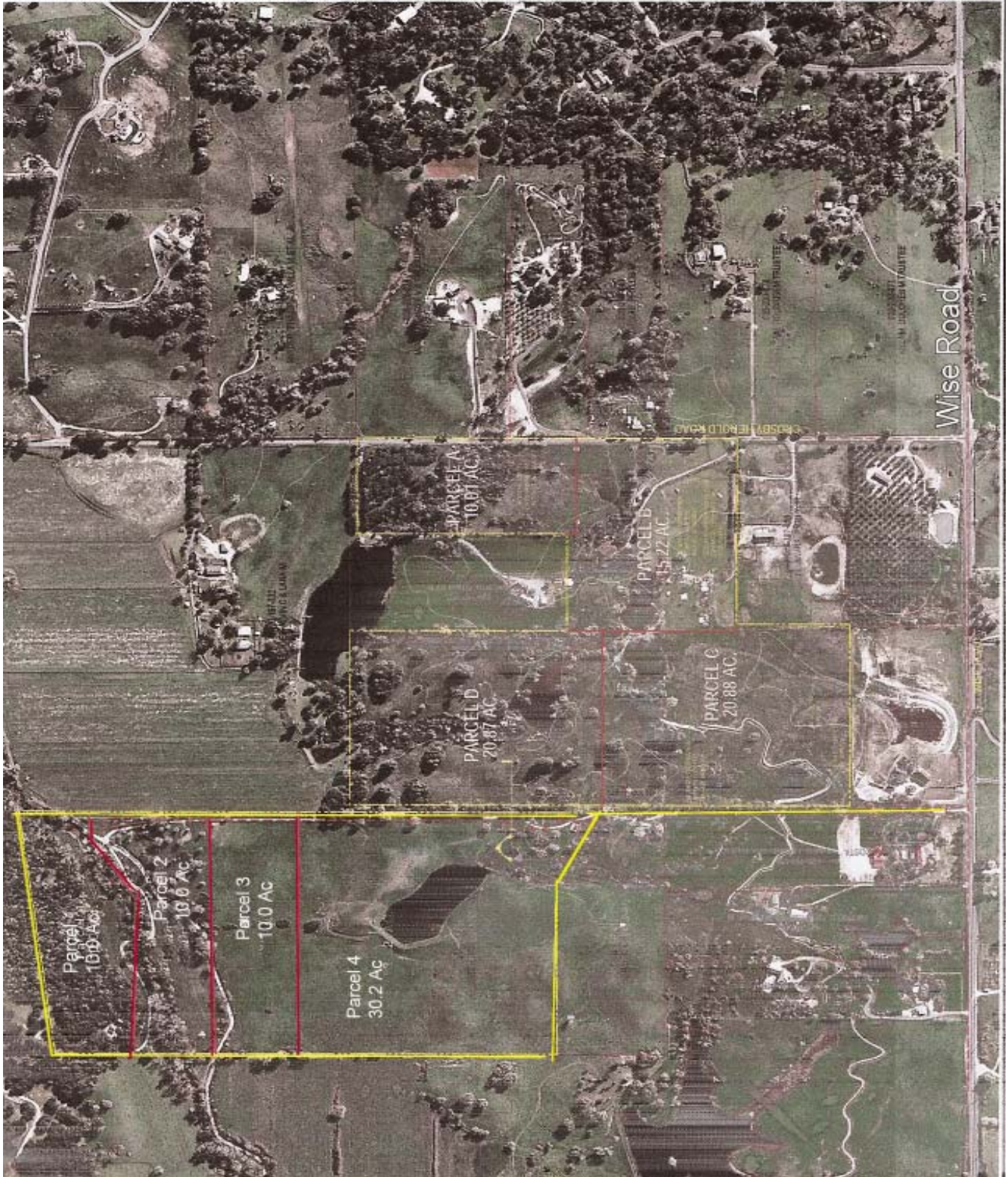
**LENDER OWNED!!**

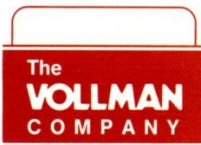




License # 00915268

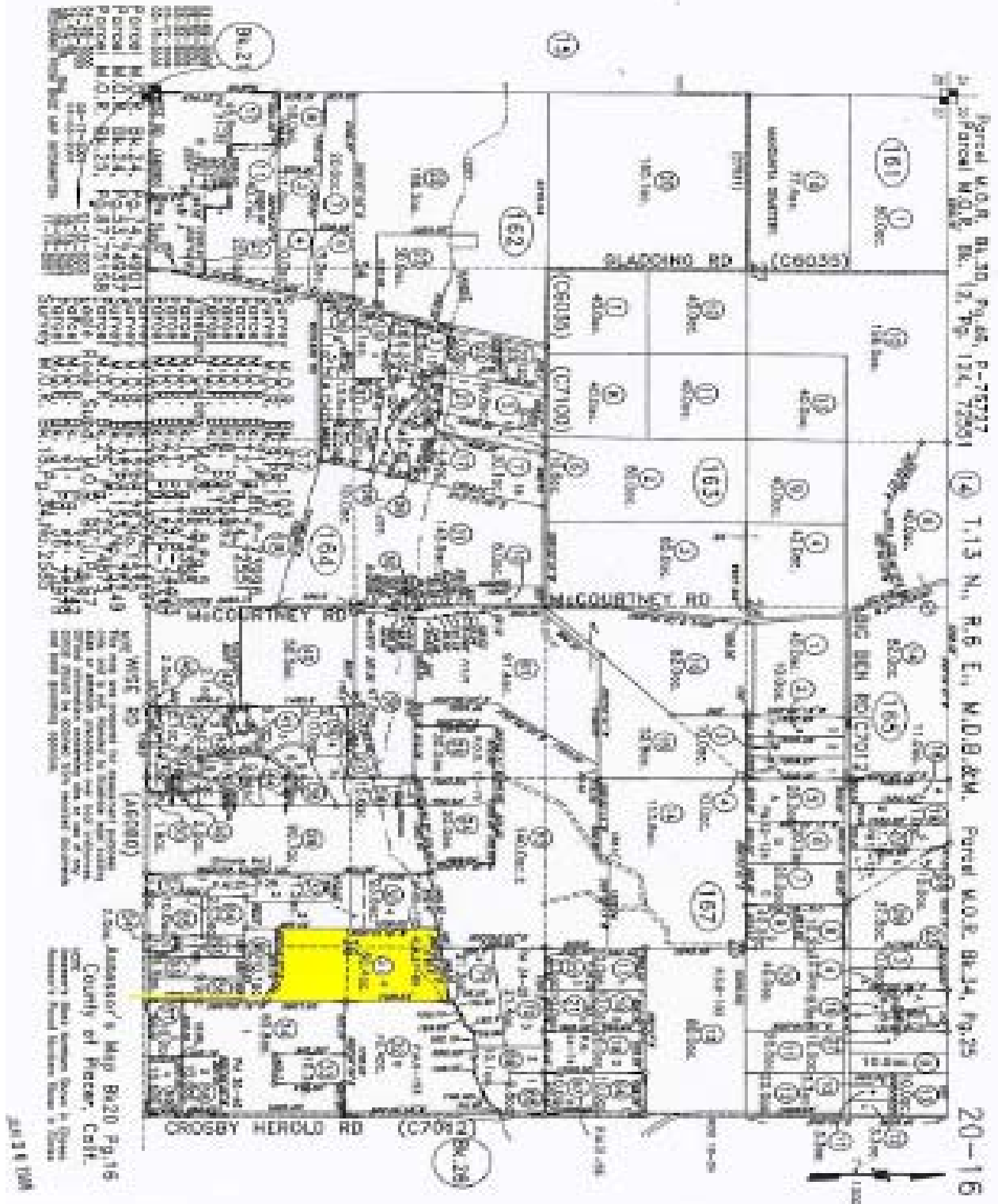
# 60.4 acres Approved Tentative Map Wise Road, Lincoln, CA

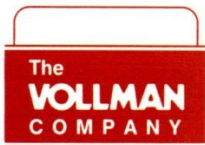




License # 00915268

# 60.4 acres Approved Tentative Map Wise Road, Lincoln, CA





License # 00915268

# 60.4 acres Approved Tentative Map Wise Road, Lincoln, CA

