

La Mancha Way and Creek Center Court Mack Road & Hwy 99 - Close to the DMV



APN: 118-0290-003

Size: 40,293 sq. ft.

Zoning: C-1-PU

Utilities: To Site

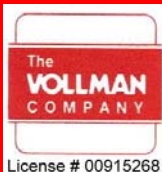
**Site Improvements: Curbs, Gutters,
Drainage, Etc.**

**Great finished commercial lot. Great location
right across from the DMV. Good location
for an insurance business**

PRICE: \$400,000.00



For Additional Information



THE VOLLMAN COMPANY, INC.
COMMERCIAL REAL ESTATE BROKERAGE
1900 POINT WEST WAY, SUITE 161
SACRAMENTO, CA 95815-4706
916/929-2000 FAX 916/929-7857
www.thevollmancompany.com

Bill George

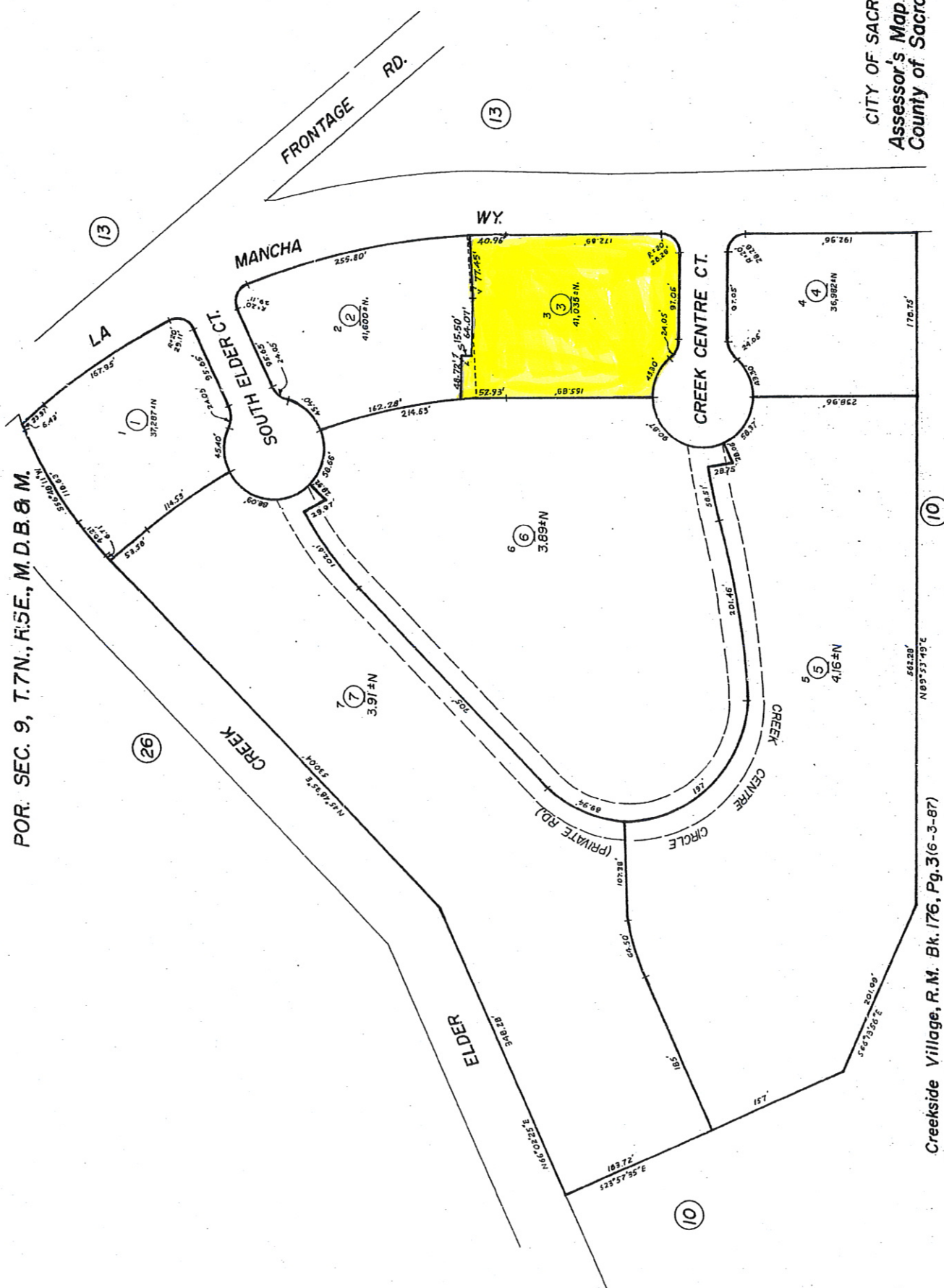
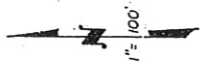
916-929-2000

bgeorge@thevollmancompany.com

THE ABOVE INFORMATION, WHILE NOT GUARANTEED, HAS BEEN SECURED FROM SOURCES WE BELIEVE TO BE RELIABLE

POR. SEC. 9, T.7N., R.5E., M.D.B. & M.

118-29



CITY OF SACRAMENTO
Assessor's Map Bk. 118, Pg. 29
County of Sacramento, Calif.

Creekside Village, R. M. Bk. 176, Pg. 3(6-3-87)