

Granite Bay Retail For Sale

8870 Auburn Folsom Blvd, Granite Bay, CA



Price Reduction!

APN: 048-132-067-000

Zoning: Commercial

Building Size: 9,092 Square Feet

Improvements: 31 Parking Spaces

Lot Size: 33,541 Square Feet

\$1,395,000



This busy Granite Bay retail property is for sale, all four units are leased. The Owner of the property is retiring and would consider financing the property with 25% down. Call today for more information or to tour the property.

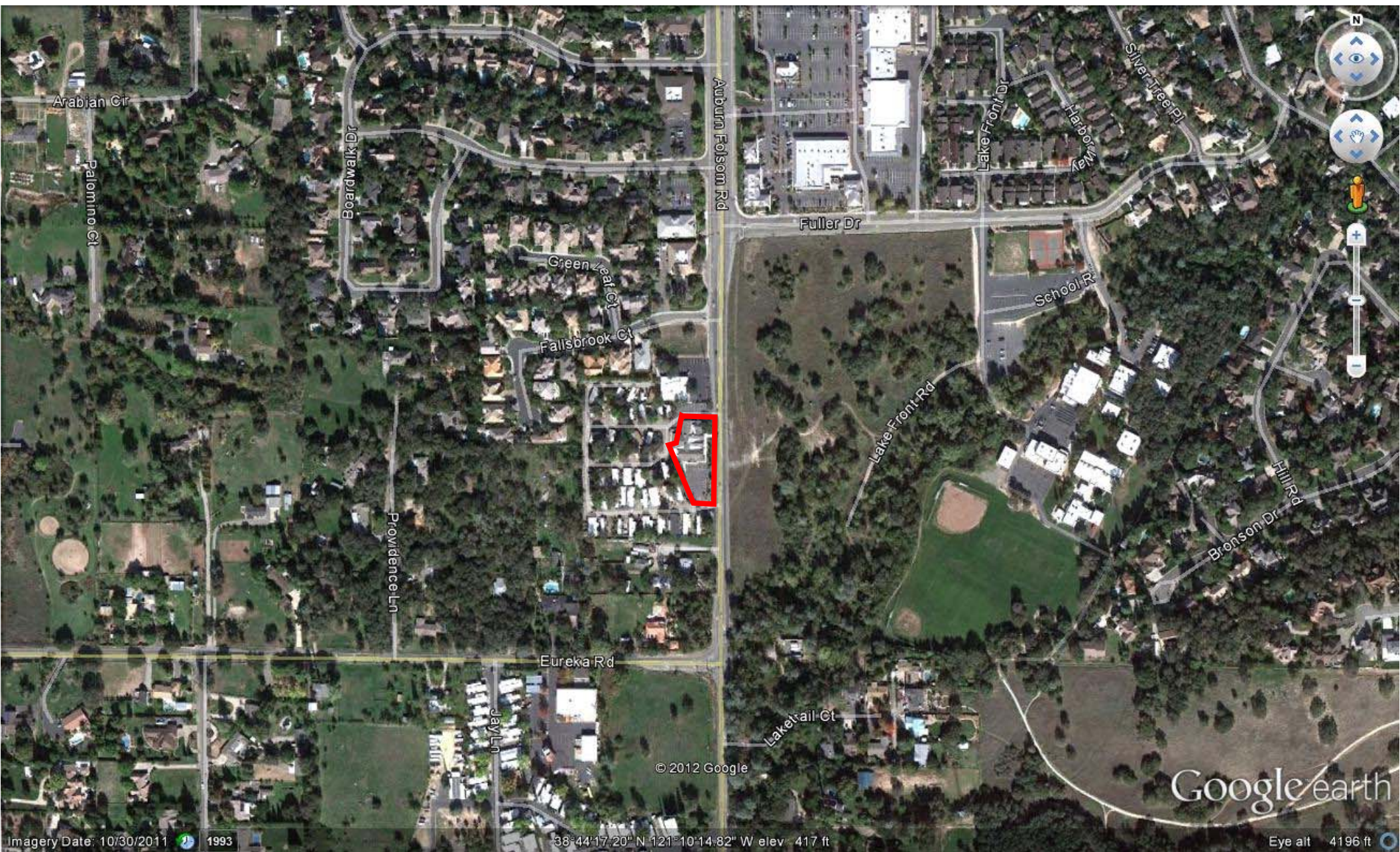
For Information Contact:
Don Deavens - (916) 929-2000
ddeavens@thevollmancompany.com



License # 00915268

THE VOLLMAN COMPANY, INC.
COMMERCIAL REAL ESTATE BROKERAGE
1900 POINT WEST WAY, SUITE 161
SACRAMENTO, CA 95815-4706
916/929-2000 FAX 916/929-7857
www.thevollmancompany.com

THE ABOVE INFORMATION, WHILE NOT GUARANTEED, HAS BEEN SECURED FROM SOURCES WE BELIEVE TO BE RELIABLE



© 2012 Google

Google earth

Imagery Date: 10/30/2011 1993

38°44'17.20" N 121°10'14.82" W elev 417 ft

Eye alt 4196 ft

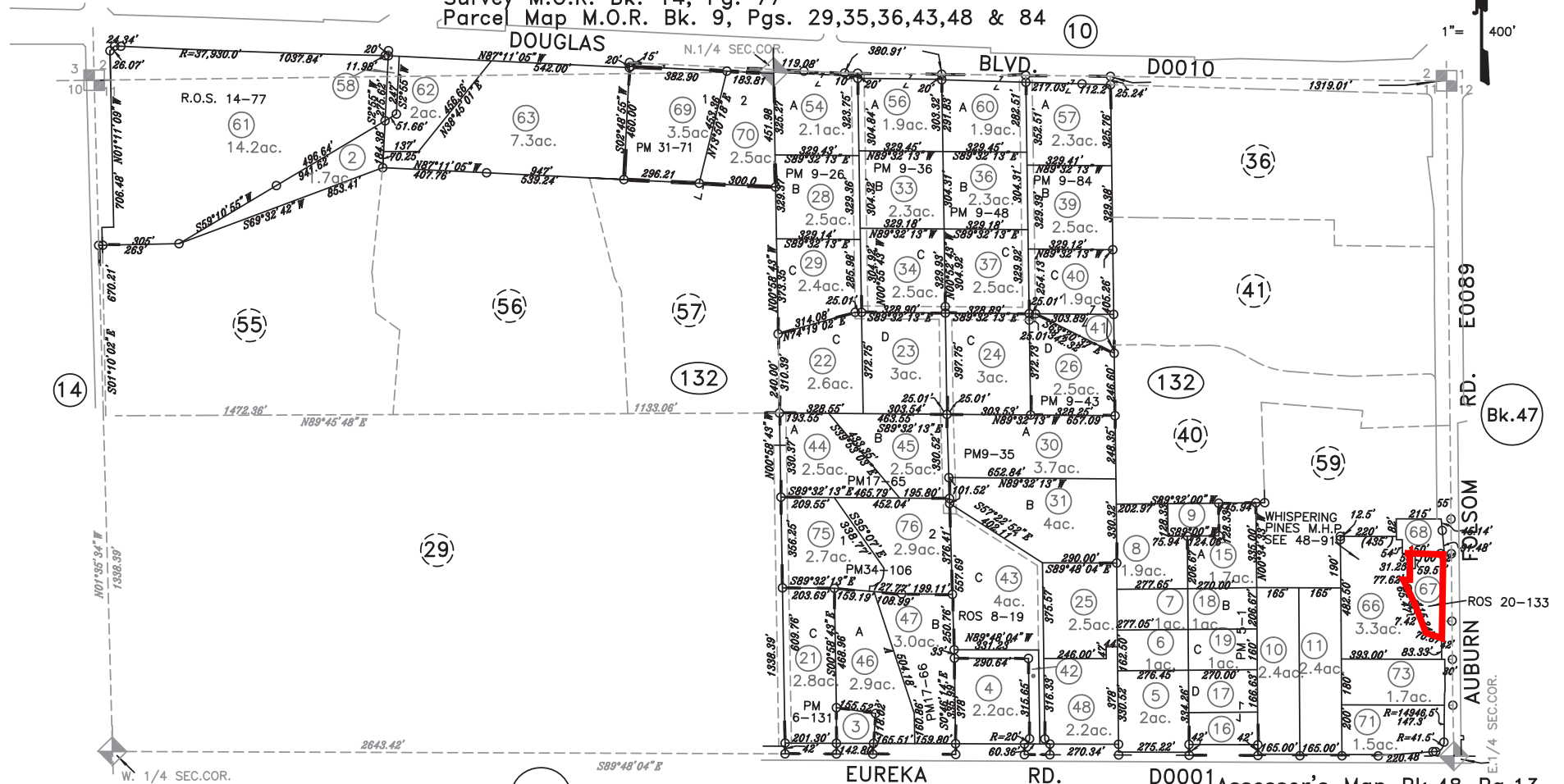
N.1\2 SEC.11 & POR.S. 1\2 SEC.2,T.10N.,R.7E., M.D.B. & M.

48-13

Survey M.O.R. Bk. 1, Pg. 41
 Parcel Map M.O.R. Bk. 4, Pg. 59
 Parcel Map M.O.R. Bk. 5, Pg. 1
 Parcel Map M.O.R. Bk. 6, Pg. 131

Parcel Map M.O.R. Bk.7, Pgs.47 & 48
 Parcel Map M.O.R. Bk. 17, Pgs. 65 & 66
 Parcel Map M.O.R. Bk. 18, Pg. 137
 Survey M.O.R. Bk.8, Pg. 19
 Survey M.O.R. Bk. 14, Pg. 77
 Parcel Map M.O.R. Bk. 9, Pgs. 29,35,36,43,48 & 84

Parcel Map M.O.R. Bk. 31, Pg. 71 #75735
 Parcel Map M.O.R. Bk. 34, Pg.106
 Survey M.O.R. Bk. 20, Pg. 133, # 3061



10-23-2008
 07-10-2008
 07-09-2008
 09-26-2007
 03-07-2007
 01-20-2004
 10-28-2000
 09-17-98
 SKS
 Page Redrawn on AutoCad per AMS informations.

NOTE
 All distances on curved lines are chord measurements.

NOTE
 This map was prepared for assessment purposes only, and is not intended to illustrate legal building sites or establish precedence over local ordinances. Official information concerning size or use of any parcel should be obtained from recorded documents and local governing agencies.

Assessor's Map Bk.48 Pg.13
 County of Placer, Calif.

NOTE
 Assessor's Block Numbers Shown in Ellipses.
 Assessor's Parcel Numbers Shown in Circles.