



License # 00915268

Approved Tentative Map 9 Lots - Placer County 8090 Brady Lane, Roseville, 95747



APN: 473-010-033

5.1 acres

Zoned: RS-AG-B-20

Utilities to be verified with County

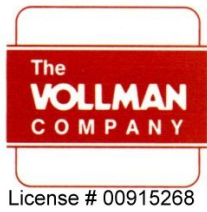
Price: \$875,000



License # 00915268

THE VOLLMAN COMPANY, INC.
COMMERCIAL REAL ESTATE BROKERAGE
1900 POINT WEST WAY, SUITE 161
SACRAMENTO, CA 95815-4706
916/929-2000 FAX 916/929-7857
www.thevollmancompany.com

For More Information:
DAN MINCHER / BILL GEORGE
916-929-2000
dmincher@thevollmancompany.com
bgeorge@thevollmancompany.com



Approved Tentative Map 9 Lots - Placer County 8090 Brady Lane, Roseville, 95747

SITE SUMMARY

SUBJECT: 5.1 acres

LOCATION: 8090 Brady Lane

APN: 473-010-033

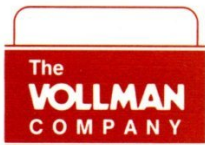
LOT DESCRIPTION:

ZONING: RS-AG, B-20

PRICE: \$875,000

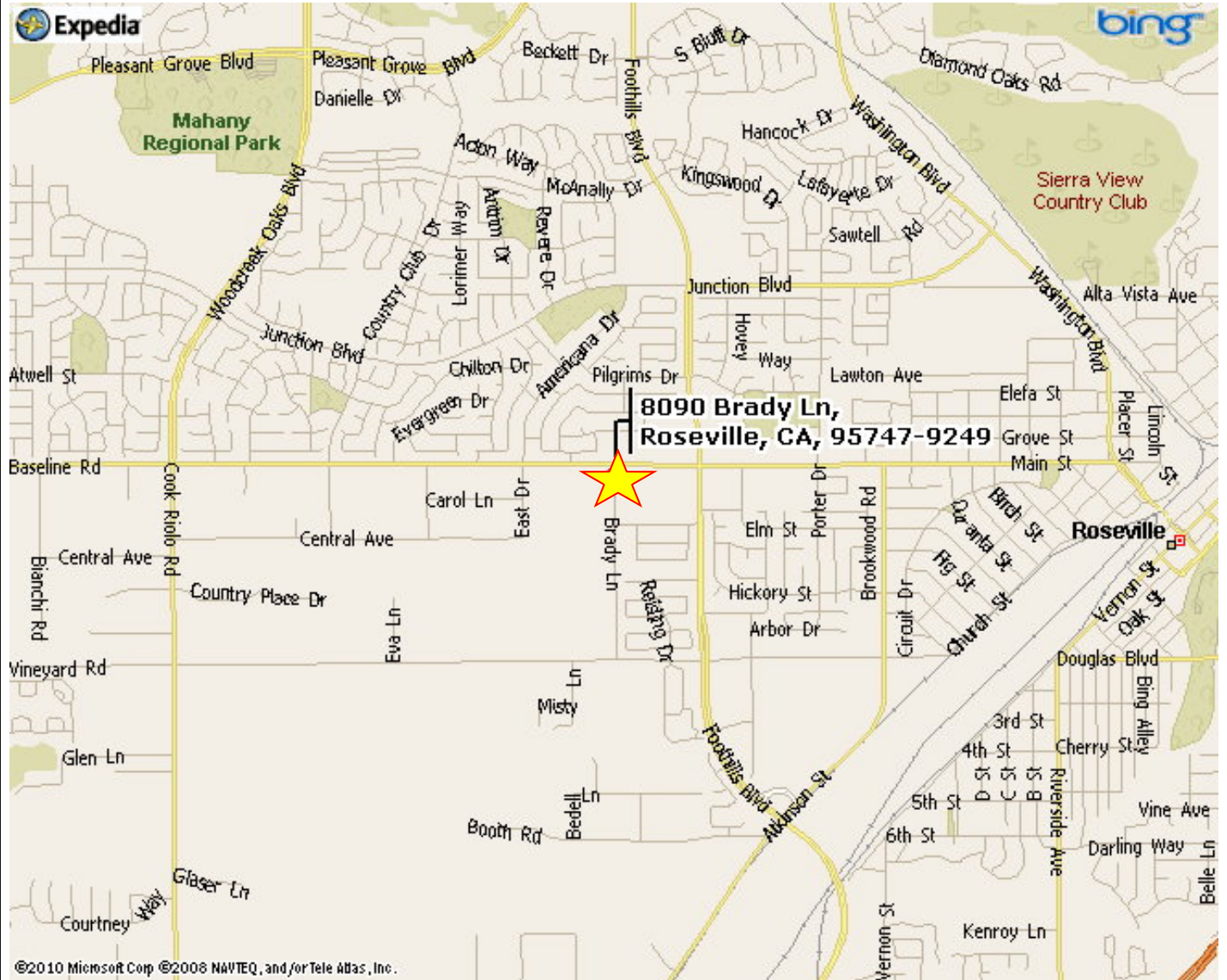
Good infill subdivision of large lots very close to Foothills Blvd. and Main Ave. just off Baseline Road. The adjacent 5 acres to the north are available For Sale, zoned commercial.

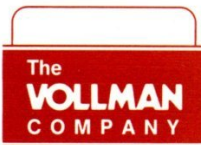




License # 00915268

Approved Tentative Map 9 Lots - Placer County 8090 Brady Lane, Roseville, 95747



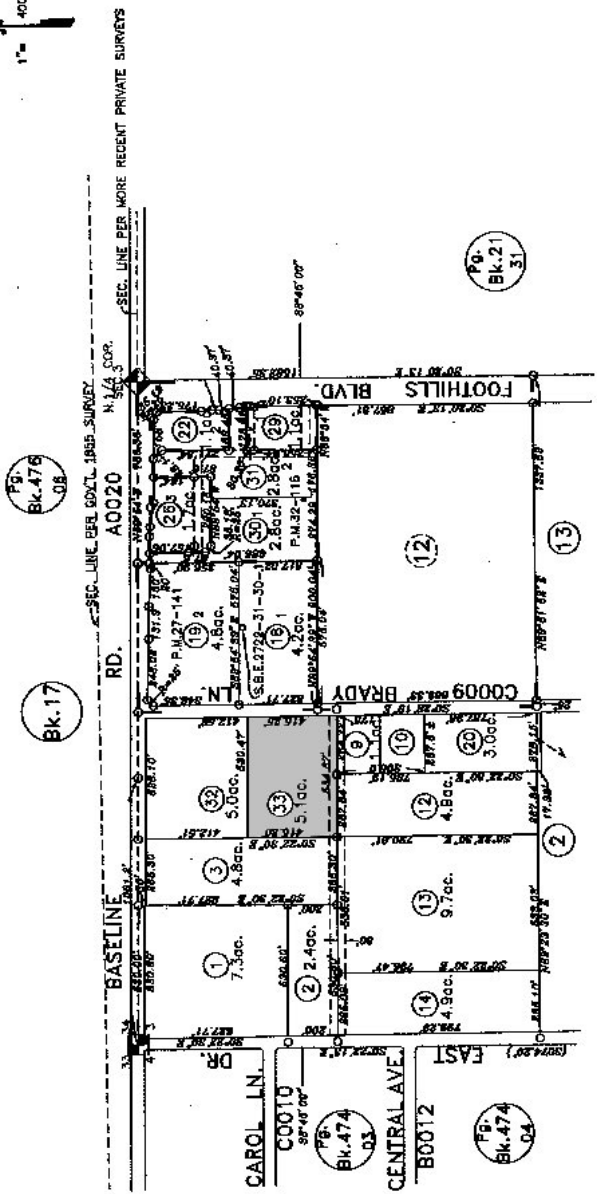


License # 00915268

Approved Tentative Map 9 Lots - Placer County 8090 Brady Lane, Roseville, 95747

473-01

Parcel M.O.R. Bk. 28, Pg. 3 (Eik Hills Plaza) M.D.B. & M. Survey M.O.R. Bk. 11, Pg. 97
Parcel M.O.R. Bk. 27, Pg. 14 Parcel M.O.R. Bk. 16, Pg. 37
Parcel M.O.R. Bk. 32, Pg. 115, No. 02-04



Assessor's Map Bk. 473 Pg. 01
County of Placer, Calif.

NOTE
Assessor's Block Numbers Shown in Ellipse.
Assessor's Parcel Numbers Shown in Circle.
NOV 20 2006

NOTE
This map was prepared for assessment purposes only and is not intended to establish or establish precedence over local ordinances. Official information concerning size or use of any parcel should be obtained from recorded documents and local governing agencies.

NOTE
All distances on curved lines are chord measurements.

11-07-2006
02-10-2001 JAC
Page Redrawn Per BaseMap Information & Electronically.