

Office/Retail Condo For Sale



THE VOLLMAN COMPANY, INC.
COMMERCIAL REAL ESTATE BROKERAGE
1900 POINT WEST WAY, SUITE 161
SACRAMENTO, CA 95815-4706
916/929-2000 FAX 916/929-7857
www.thevollmancompany.com

License # 00915268

3430 Robin Lane #6, Cameron Park, CA 95682

Size: 1,426 sq. ft.
Charming Two Story Professional Building
Well Maintained and Very Clean
4 Private Offices / Large Open Area
Condo is Wired for internet and multi phone/data lines
Easy Freeway Access
Zoning: CP-DC-PD / Land Use is Commercial
Perfect Investment / Owner User
Ample Parking
Good Location for Office, Retail, Salon Studio, Yoga/Massage Studio, Law/Accounting, Insurance, Boutique Style Retail and Many More

Association Fees include water, sewer, landscaping, parking lot maintenance, exterior and roof maintenance



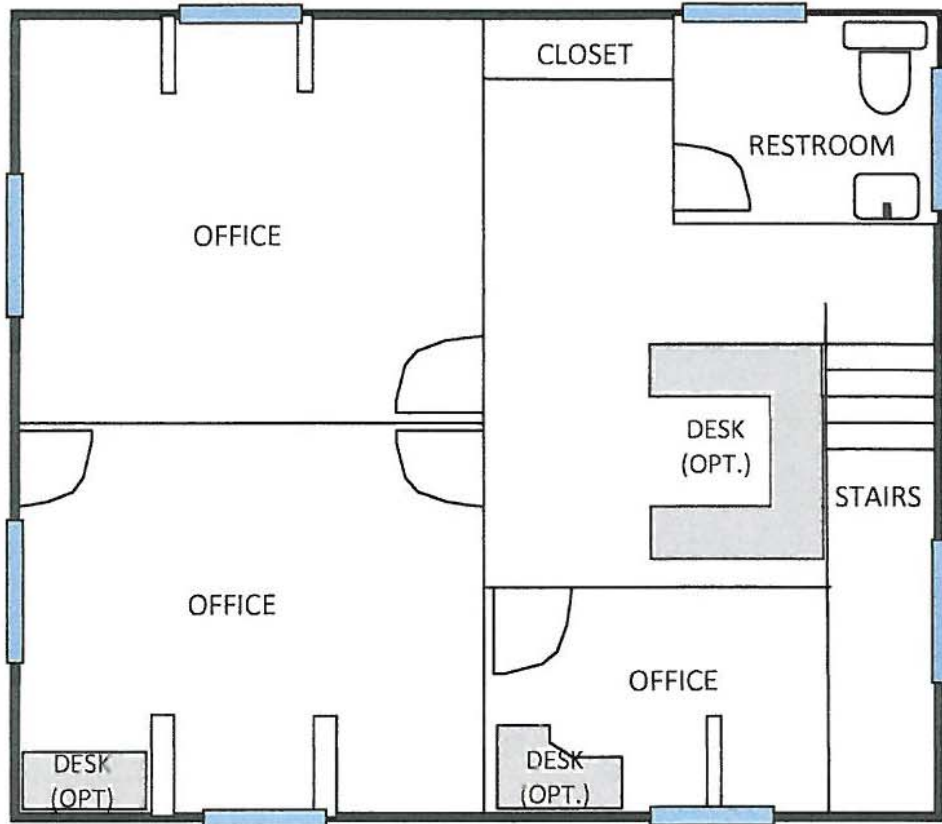
Sale Price: \$165,000.00

For More Information Contact
Lu Ann Henderson (916) 798-8559
lhenderson@thevollmancompany.com



3430 Robin Lane #6 - Floor Plan

**UNIT B
UPPER FLOOR**



**UNIT A
GROUND FLOOR**



