

COMMERCIAL LAND FOR SALE

1526 Merkley Avenue, West Sacramento, CA 95691



APN: 067-012-000

Zoning: Commercial

**Lot Size: .36 acres or
15,321 sf**

Utilities: ALL

PRICE: \$199,000

Great West Sacramento location near City Hall, Raley's, US Post Office, Bank of America, American River College West Sacramento Campus, Safeway, Chase Bank and Walgreens. The parcel has existing curb, gutter and is ready to build on.



License # 00915268

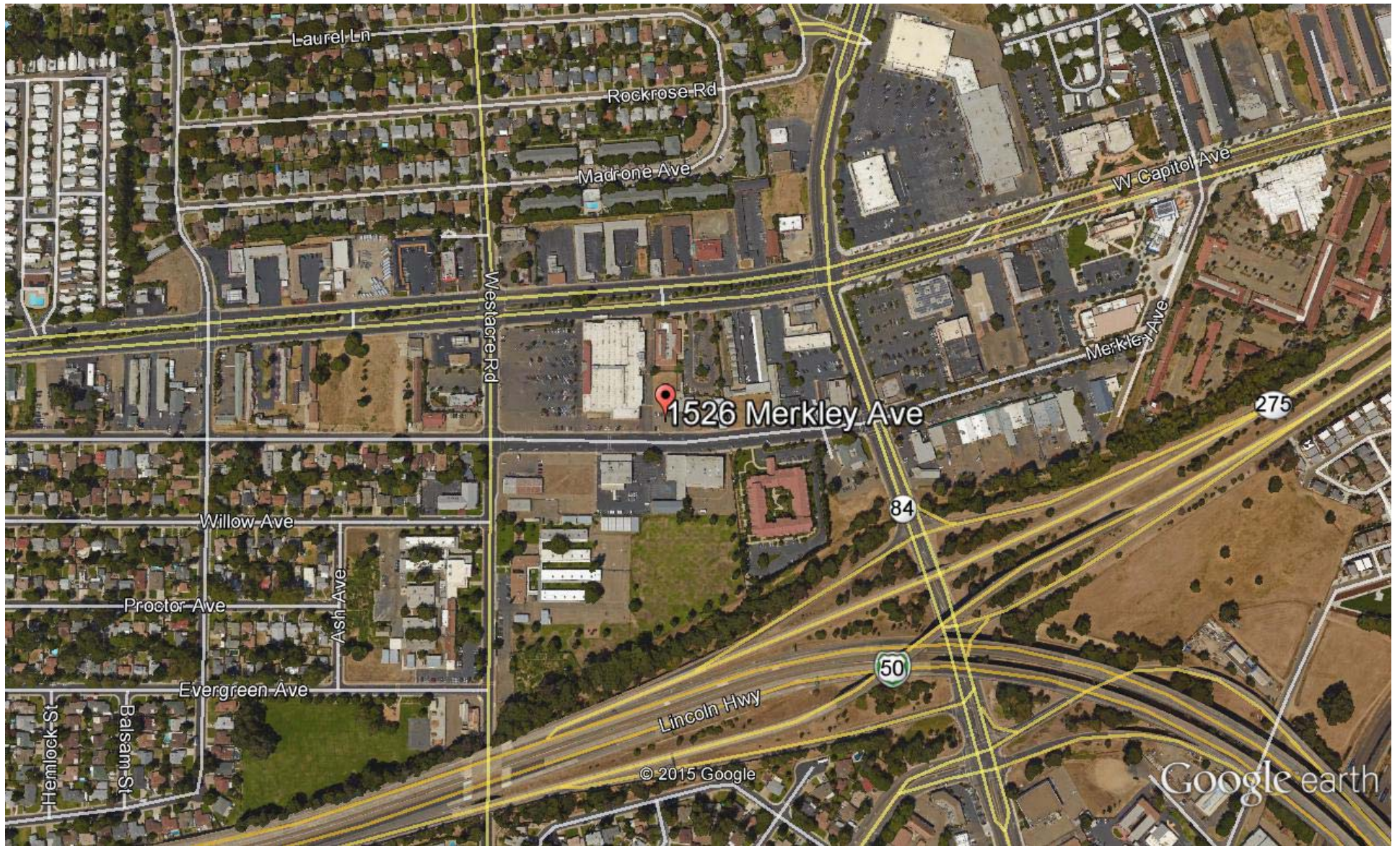
THE VOLLMAN COMPANY, INC.
COMMERCIAL REAL ESTATE BROKERAGE
1900 POINT WEST WAY, SUITE 161
SACRAMENTO, CA 95815-4706
916/929-2000 FAX 916/929-7857
www.thevollmancompany.com

For More Information Contact - (916) 929-2000

Don Deavens - ddeavens@thevollmancompany.com

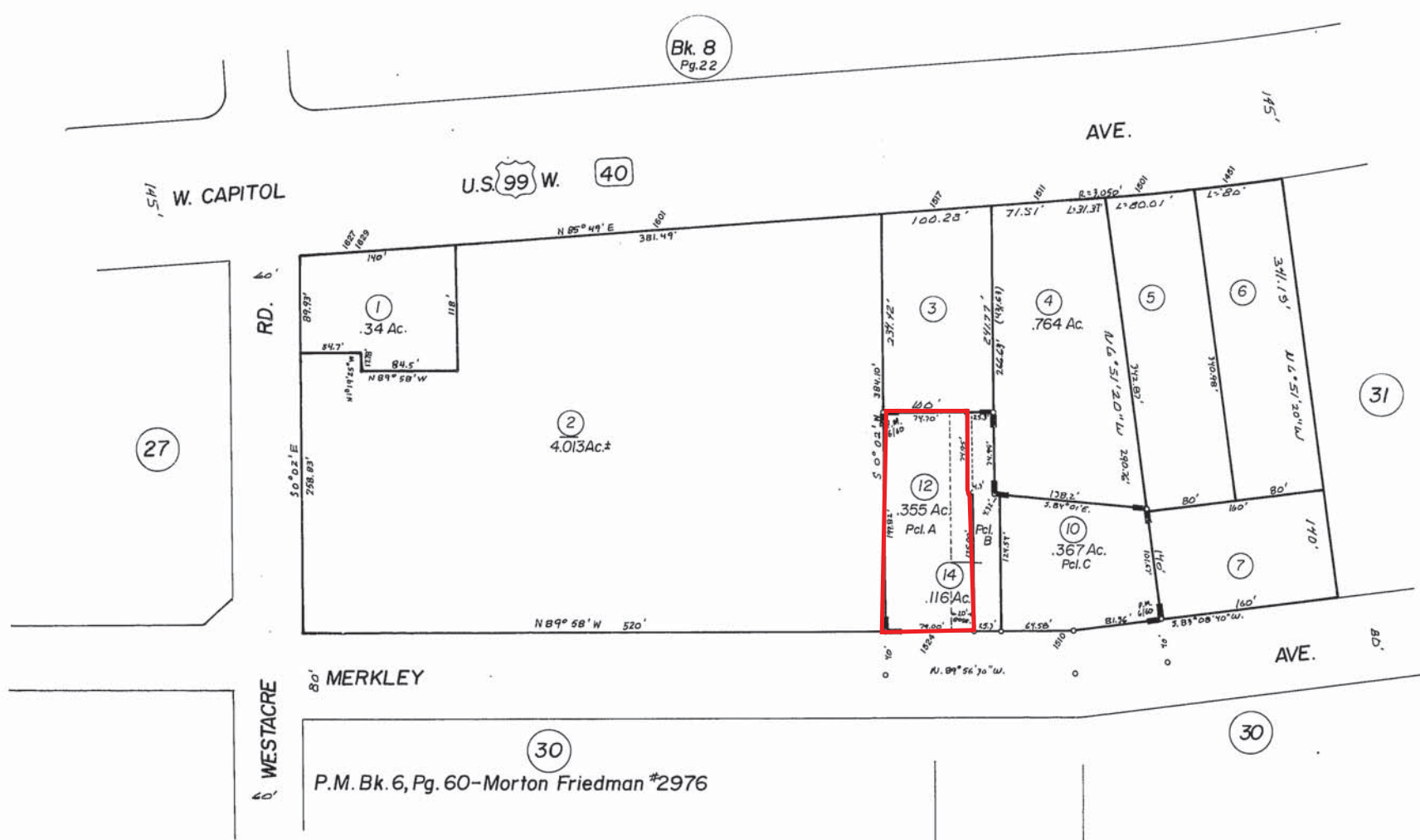
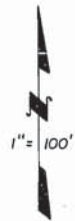
LuAnn Henderson - lhenderson@thevollmancompany.com

THE ABOVE INFORMATION, WHILE NOT GUARANTEED, HAS BEEN SECURED FROM SOURCES WE BELIEVE TO BE RELIABLE



Google earth





Bk. 8
Pg. 22

27

2

3

4

5

6

31

12

14

10

7

30

30

W0 7077L 7/10/86
 W0 6587A 12/6/84
 W0 5710J 5/4/82
 W0 5737L 11/16/81
 DDT 2201 9/25/74 addy P. mdy
 D.O.T. 735L 2/28/73
 -REVISED-

P.M. Bk. 6, Pg. 60 - Morton Friedman #2976

CITY OF WEST SACRAMENTO
Assessor's Map Bk. 67, Pg. 29
County of Yolo, Calif.

(formerly 9-08)

NOTE - Assessor's Block Numbers Shown in Ellipses
Assessor's Parcel Numbers Shown in Circles

87/88