

# Commercial Office For Lease

921 Drever Street, West Sacramento, CA



APN: 058-015-004-000

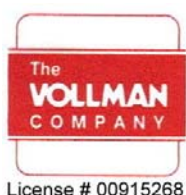
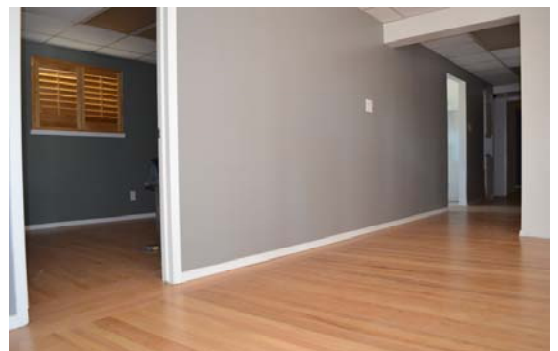
Total sq. ft. 3,120

Available: 1,560 sq. ft. BOTTOM FLOOR

Zoning: C-3 Office

- Fully updated and remolded Office Building.
- 5 private offices, full kitchen/ break room.
- Privately Gated
- ADA compliant. Great Location off Jefferson Blvd, Easy Freeway Access.
- Ideal for a Law Firm, CPA, Insurance Company and much more.
- Motivated Occupancy

PRICE: \$.95 psf



License # 00915268

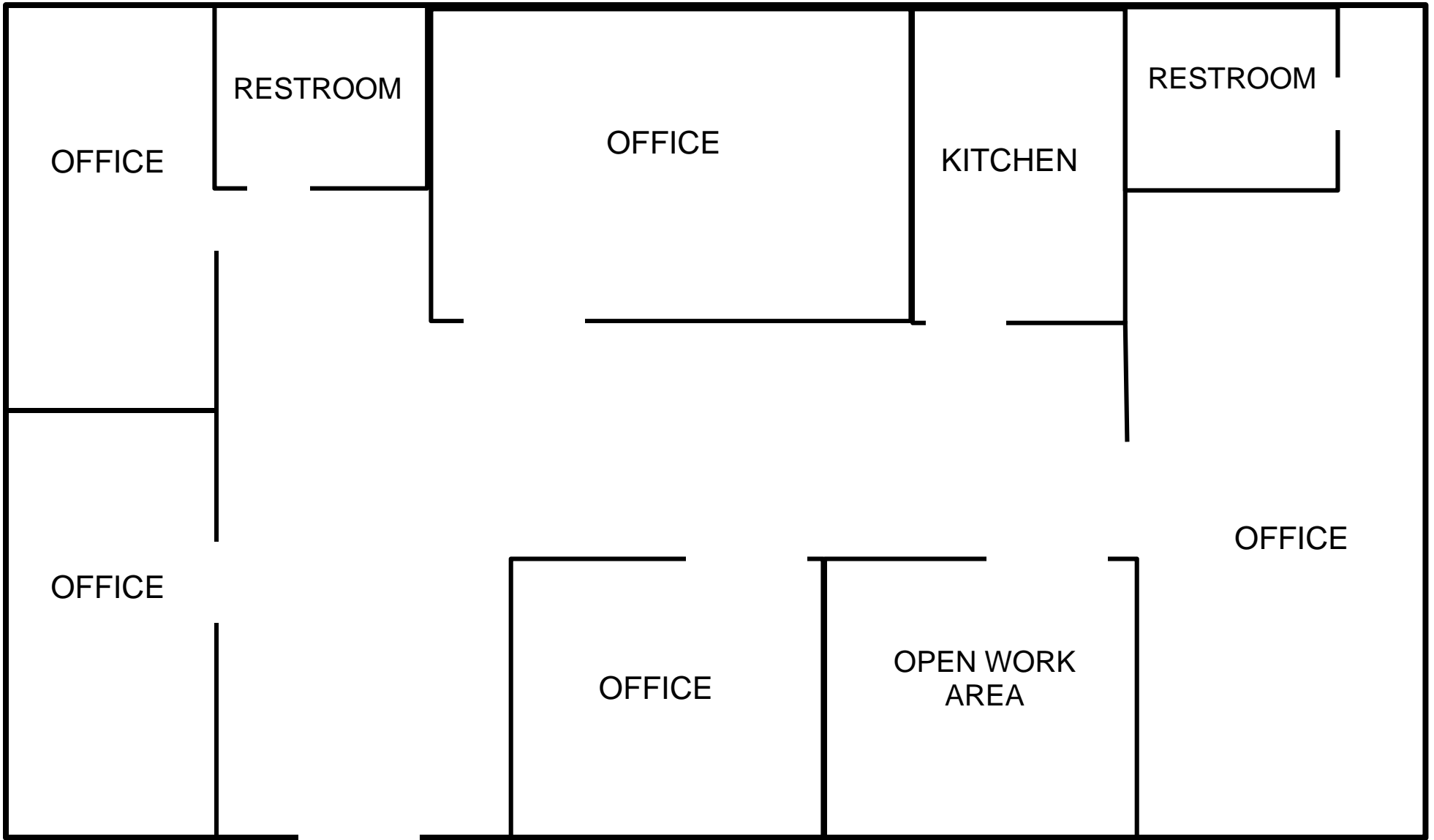
**THE VOLLMAN COMPANY, INC.**  
COMMERCIAL REAL ESTATE BROKERAGE  
1900 POINT WEST WAY, SUITE 161  
SACRAMENTO, CA 95815-4706  
916/929-2000 FAX 916/929-7857  
[www.thevollmancompany.com](http://www.thevollmancompany.com)

For More Information Contact

Lu Ann Henderson - (916) 929-2000 ext 224

Cell - (916) 798-8559

[lhenderson@thevollmancompany.com](mailto:lhenderson@thevollmancompany.com)



**921 DREVER STREET**



Google earth

feet  
meters



