

# Office Space For Lease

**4748 Engle Rd, Carmichael, CA 95608**



- ◆ 3 Suites Available
  - Suite 105: 600 sf
  - Suite 204: 800 sf
  - Suite 206: 1,000 sf
  - Suite 202: 700 sf - Coming Soon
- ◆ Two Story 11,965 sf Office Building
- ◆ Ample Parking
- ◆ Elevator
- ◆ Mature Landscaping

FOR FURTHER INFORMATION, CONTACT:

**DENNIS VOLLMAN**

[dvollman@thevollmancompany.com](mailto:dvollman@thevollmancompany.com)

**DAN MINCHER**

[dmincher@thevollmancompany.com](mailto:dmincher@thevollmancompany.com)

**LU ANN HENDERSON**

[lhenderson@thevollmancompany.com](mailto:lhenderson@thevollmancompany.com)  
CURED FROM SOURCES WE BELIEVE TO BE RELIABLE

**Lease Rate: \$.75psf/NNN  
NNN - \$.26/psf**



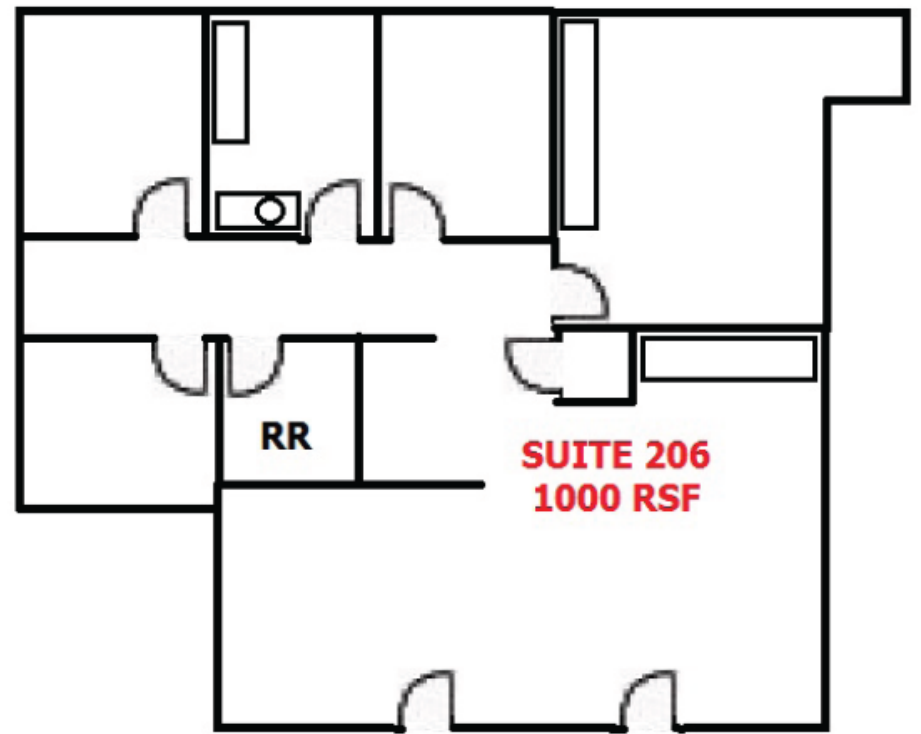
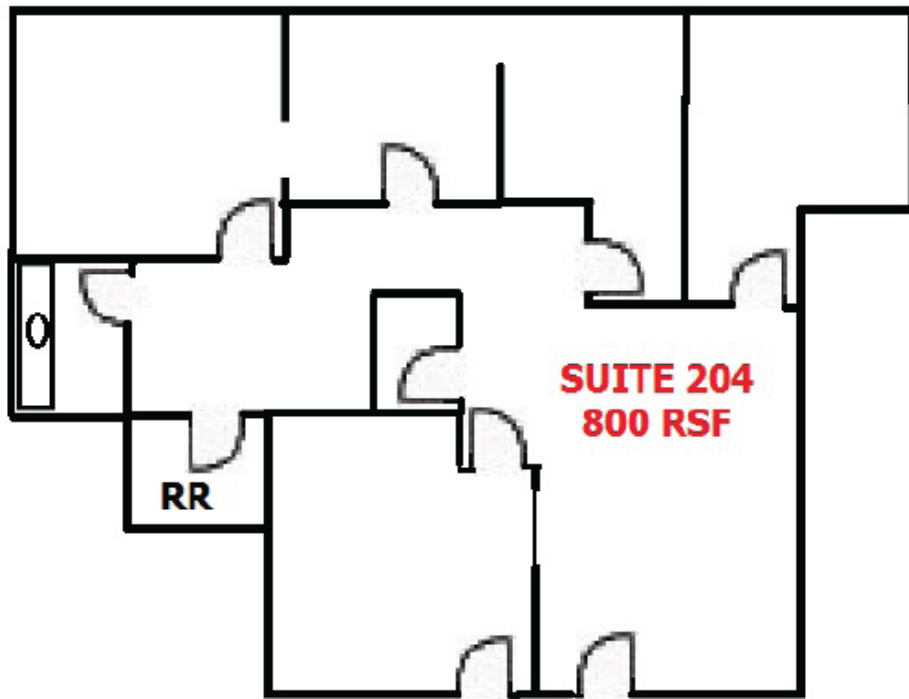
License # 00915268

**THE VOLLMAN COMPANY, INC.**  
COMMERCIAL REAL ESTATE BROKERAGE  
1900 POINT WEST WAY, SUITE 161  
SACRAMENTO, CA 95815-4706  
916/929-2000 FAX 916/929-7857  
[www.thevollmancompany.com](http://www.thevollmancompany.com)

THE ABOVE INFORMATION, WHILE NOT GUARANTEED, HAS BEEN SE-

# Office Space For Lease

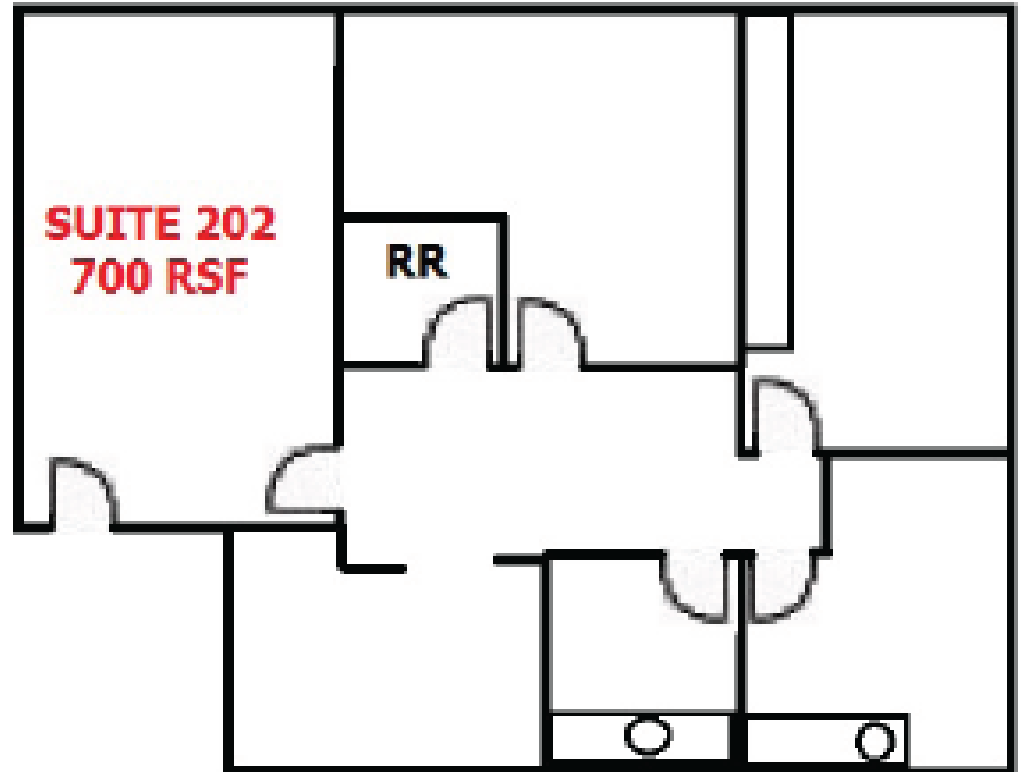
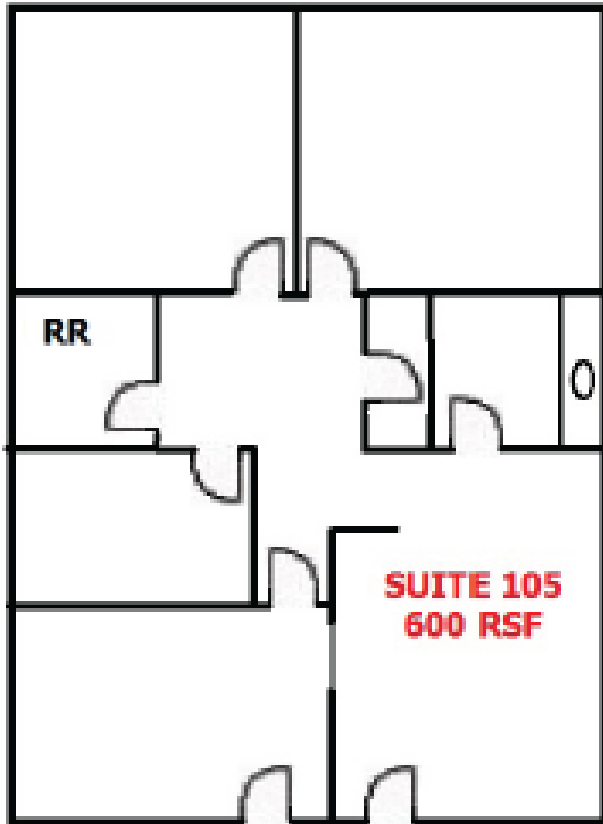
4748 Engle Rd, Carmichael, CA 95608



THE ABOVE INFORMATION, WHILE NOT GUARANTEED, HAS BEEN SECURED FROM SOURCES WE BELIEVE TO BE RELIABLE

# Office Space For Lease

4748 Engle Rd, Carmichael, CA 95608



THE ABOVE INFORMATION, WHILE NOT GUARANTEED, HAS BEEN SECURED FROM SOURCES WE BELIEVE TO BE RELIABLE



# Office Space For Lease

4748 Engle Rd, Carmichael, CA 95608



THE ABOVE INFORMATION, WHILE NOT GUARANTEED, HAS BEEN SECURED FROM SOURCES WE BELIEVE TO BE RELIABLE