



Upscale Office Space For Lease

1924 Del Paso Rd, Sacramento, CA 95834



This new upscale executive office is for lease in Natomas on Del Paso Road. The owner is looking for a long term relationship with Medical, Dentist, Chiropractor, Attorney, Accountants, Real Estate or other professional occupations. The space is approximately 1,600 square feet with 5 small offices or exam rooms, two of the rooms have sinks and water. The space is ready for your immediate occupancy.

Building Size: 1,575 sq. ft.

Lot Size: 15,608 sq. ft.

Zoning: EC - 50

APN: 225-1620-060

New Construction

Secure Parking

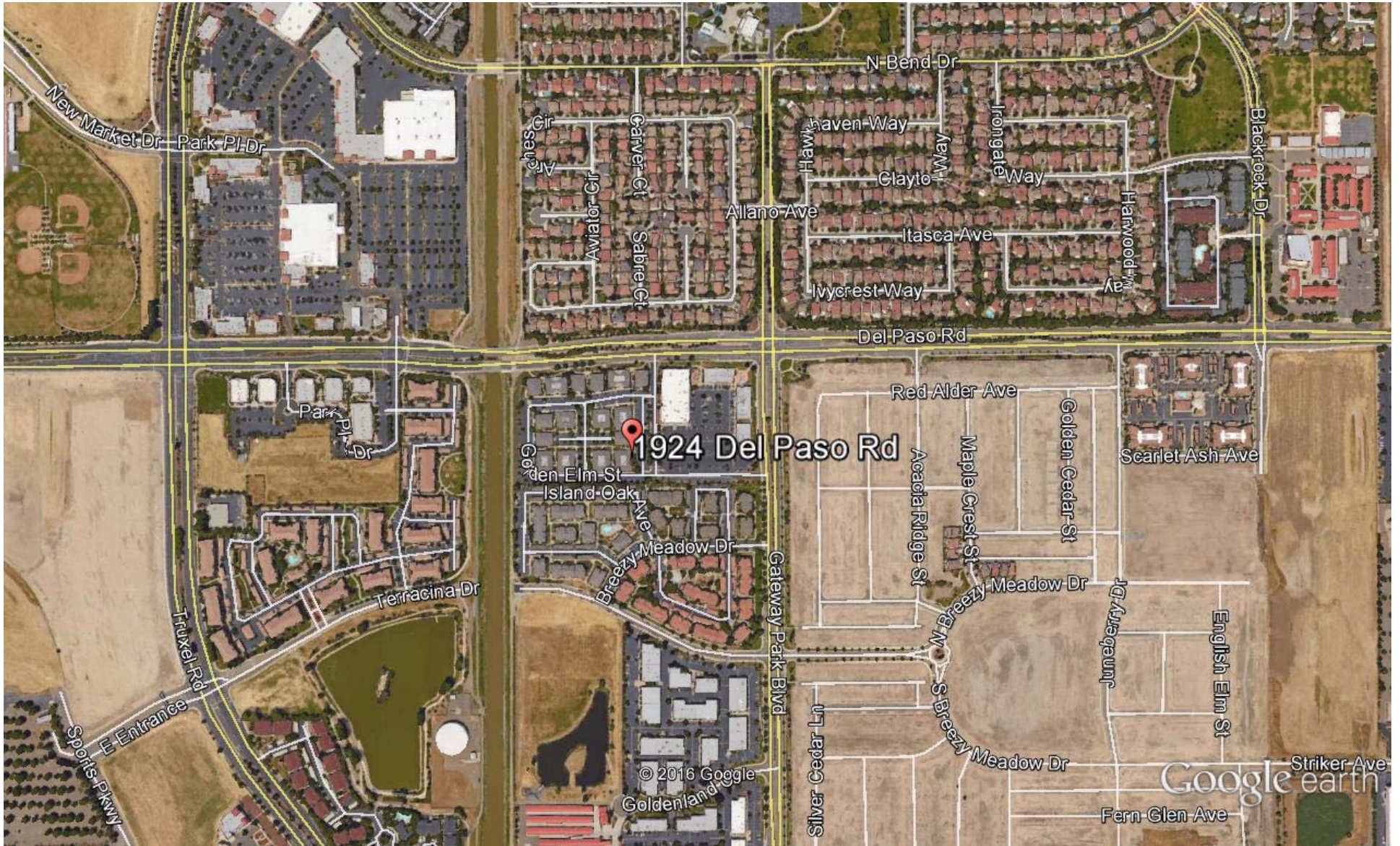


License # 00915268

THE VOLLMAN COMPANY, INC.
COMMERCIAL REAL ESTATE BROKERAGE
1900 POINT WEST WAY, SUITE 161
SACRAMENTO, CA 95815-4706
916/929-2000 FAX 916/929-7857
www.thevollmancompany.com

For More Information Contact
Don Deavens (916) 929 - 715-1873
deavens@thevollmancompany.com





Google earth

feet
km



DISCLAIMER: ASSESSORS PARCELS ARE FOR TAX ASSESSMENT PURPOSES ONLY AND DO NOT INDICATE EITHER PARCEL LEGALITY OR A VALID BUILDING SITE. THE COUNTY OF SACRAMENTO ASSUMES NO RESPONSIBILITY ARISING FROM USE OF THIS INFORMATION.

225-162

POR SEC'S 11 & 12, T.9N., R.4E., M.D.B. & M.



Exhibit "A"
(225-1620-026-0000)

- BLD. Ab
unit no. sub no.
A-----0001
B-----0002
C-----0003
D-----0004
E-----0005
F-----0006

Exhibit "B"
(225-1620-025-0000)

- BLD. Aa
unit no. sub no.
A-----0001
B-----0002
C-----0003
D-----0004
E-----0005
F-----0006

Natomas Professional Center PM Bk 197 Pg 21 (12-11-2006)
Goldenland Properties R.M. Bk.280, Pg.6 (12-8-2000)
Goldenland Court Condominium Plan

CITY OF SACRAMENTO
Assessor's Map Bk.225 Pg. 162
County of Sacramento, Calif.

Feb 25, 2014