

RETAIL BUILDING FOR LEASE

1600 Sacramento Avenue, West Sacramento, CA 95605

APN: 014-054-010-000

Building Size: 3,371 sq. ft.
Located on .26 acres

Space Available: 766 sq. ft.

Zoning: C-2

2 Star Freestanding Building

Price: \$1.00 psf / NNN



License # 00915268

THE VOLLMAN COMPANY, INC.
COMMERCIAL REAL ESTATE BROKERAGE
1900 POINT WEST WAY, SUITE 161
SACRAMENTO, CA 95815-4706
916/929-2000 FAX 916/929-7857
www.thevollmancompany.com



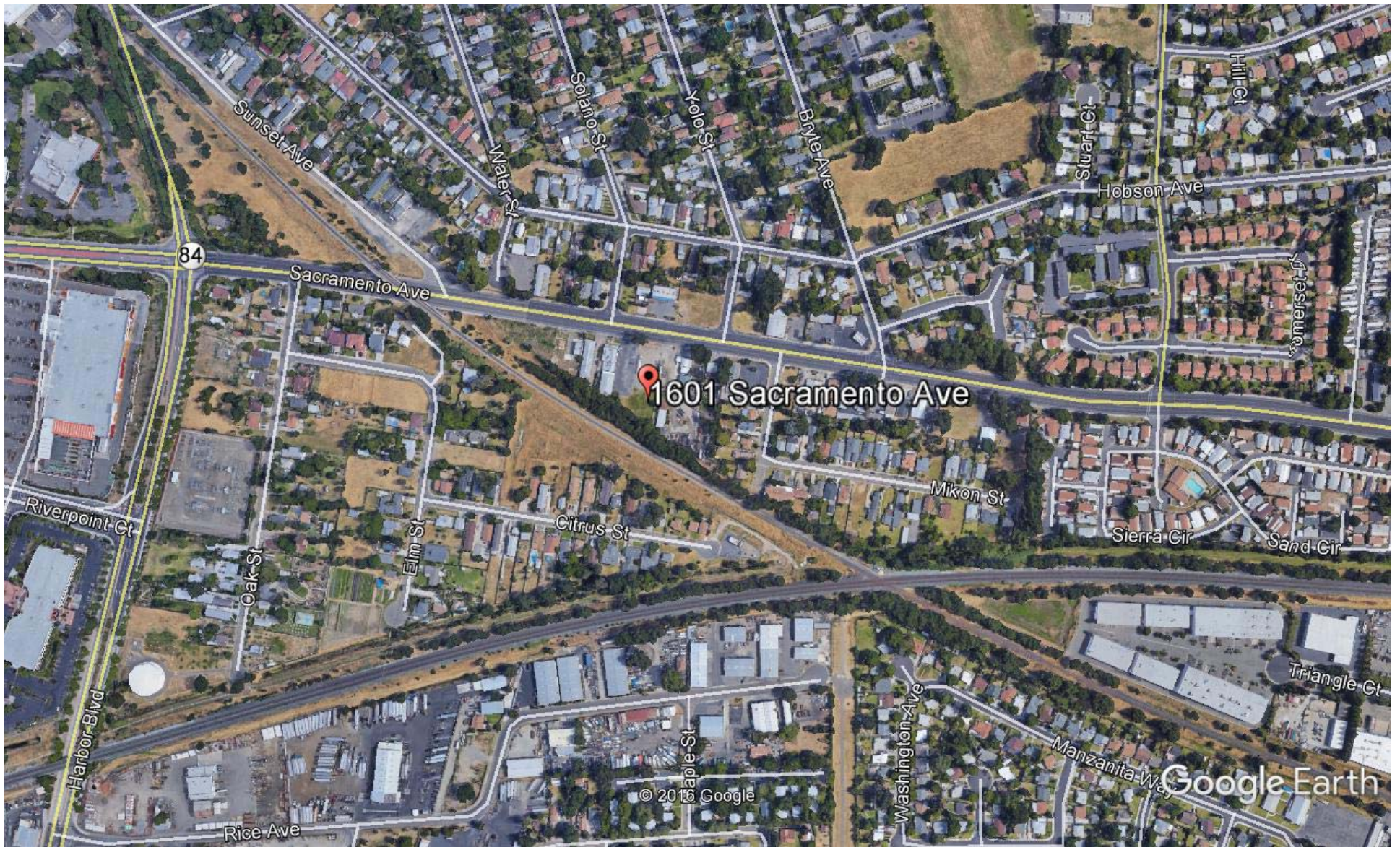
- ◆ Small Retail in West Sacramento
- ◆ I80 & Reed Avenue thoroughfare
- ◆ Close to Ikea Shopping Center
- ◆ High Visibility with Monument signage
- ◆ Convenient Parking

FOR FURTHER INFORMATION, CONTACT:

(916) 929-2000 or (916) 798-8559

LuAnn Henderson- lhenderson@thevollmancompany.com

THE ABOVE INFORMATION, WHILE NOT GUARANTEED, HAS BEEN SECURED FROM SOURCES WE BELIEVE TO BE RELIABLE



Google Earth

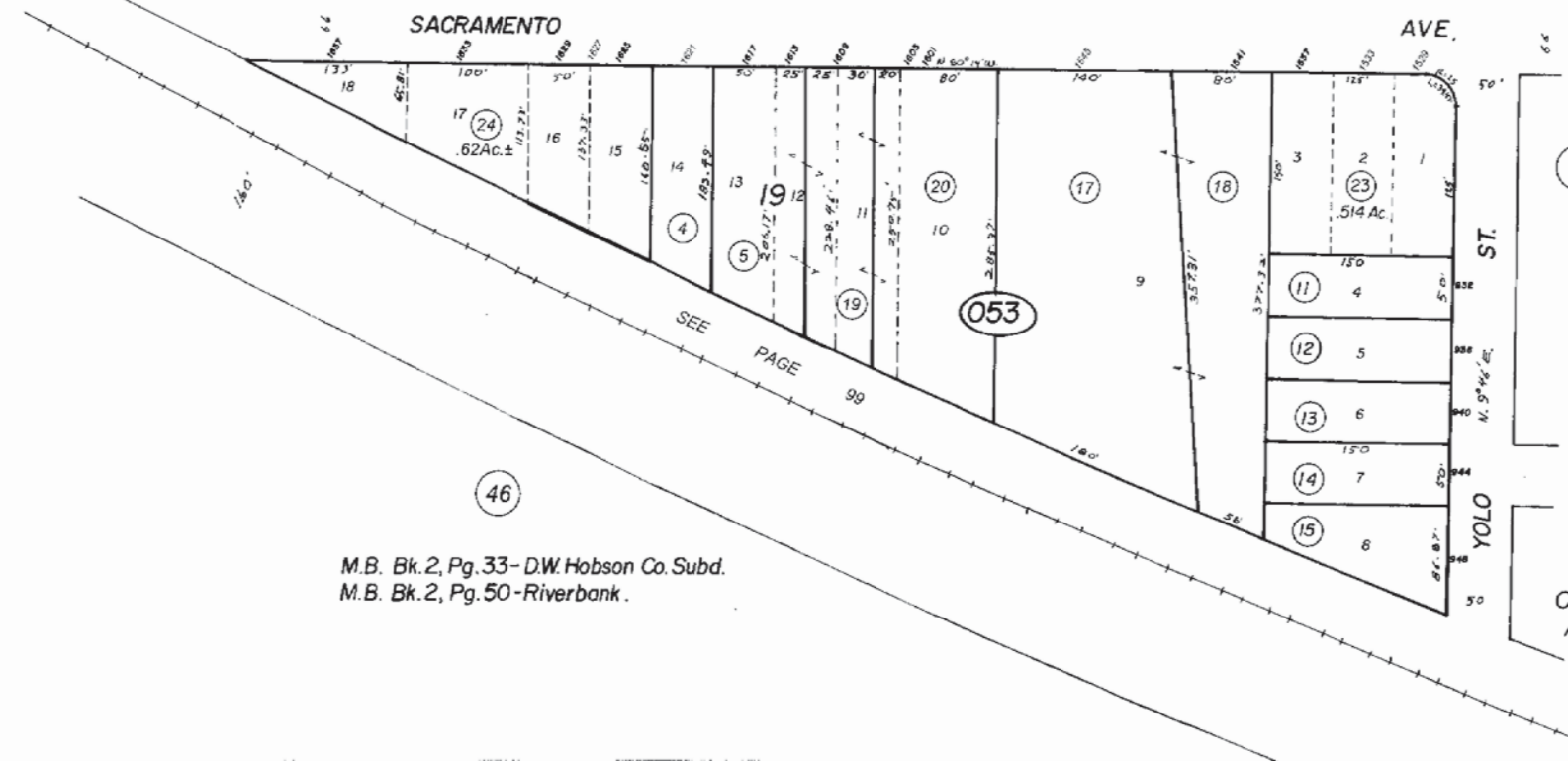
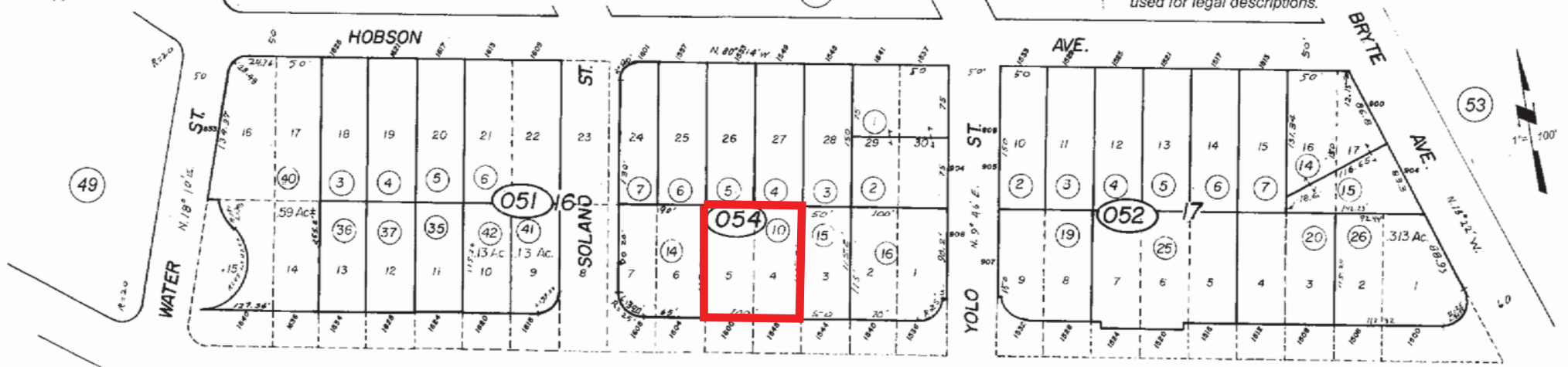
feet
meters



POR. OF SEC. 28, T. 9N., R. 4E., M.D.B. & M.

CAUTION - These Maps ARE NOT to be used for legal descriptions.

14 - 05



M.B. Bk. 2, Pg. 33-D.W. Hobson Co. Subd.
M.B. Bk. 2, Pg. 50-Riverbank.

W.O. 215056D	11/03/14
W.O. 7073 L	4/30/06
W.O. 50811 -	2/15/57
W.O. 5155 C	10/09/59
W.O. 4035 L	1/21/36
W.O. 11237 D	12/24/58
W.O. 3749	2/30/76
DDT 3106 L	6/23/75
DDT 2524	4/21/75
DDT 1875 -	8/21/74
DDT 1795	2/5/74
1429 - 10-25-73	
1379 - 10-25-73	
1190 - 10-25-73	
- REVISIONS -	

CITY OF WEST SACRAMENTO
Assessor's Map Bk. 14, Pg. 05
County of Yolo, Calif.

NOTE - Assessor's Block Number Shown in Ellipses.
Assessor's Parcel Number Shown in Circles.