

Retail Space For Lease

1115 Front St, Old Sacramento, CA 95814



Cracker Building

APN - 006-0072-024
Size - 24,300 sq. ft. / 0.21 acre
Zoning - C3
ADA Accessible

Price - Call Broker

Retail space is once again available at the Landmark Cracker Building in Old Sacramento. The property is located across the street from The Rio City Café, Joe's Crab Shack and Laugh's Unlimited. We have two retail locations available on the street level and approximately an 8,000 square foot Event Center, complete with its own elevator. Abundant parking is available next door, only steps away. Call today to tour this magnificent property.



Back Door Lounge



Front Entrance / Door

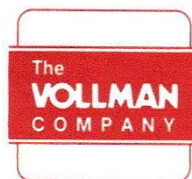


Event Center

For Additional Information Contact:

Don Deavens - (916) 929-2000

ddeavens@thevollmancompany.com



License # 00915268

THE VOLLMAN COMPANY, INC.
COMMERCIAL REAL ESTATE BROKERAGE
1900 POINT WEST WAY, SUITE 161
SACRAMENTO, CA 95815-4706
916/929-2000 FAX 916/929-7857
www.thevollmancompany.com

THE ABOVE INFORMATION, WHILE NOT GUARANTEED, HAS BEEN SECURED FROM SOURCES WE BELIEVE TO BE RELIABLE



Event Center Elevator



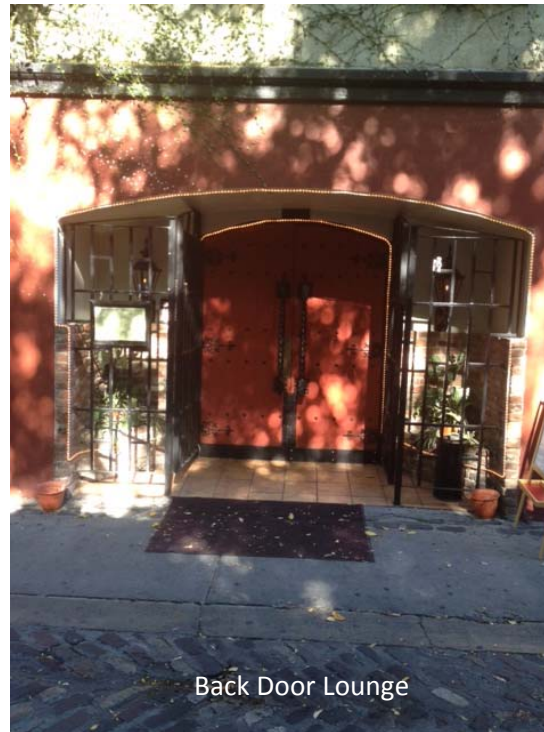
10 Retail Shops



Building Parking



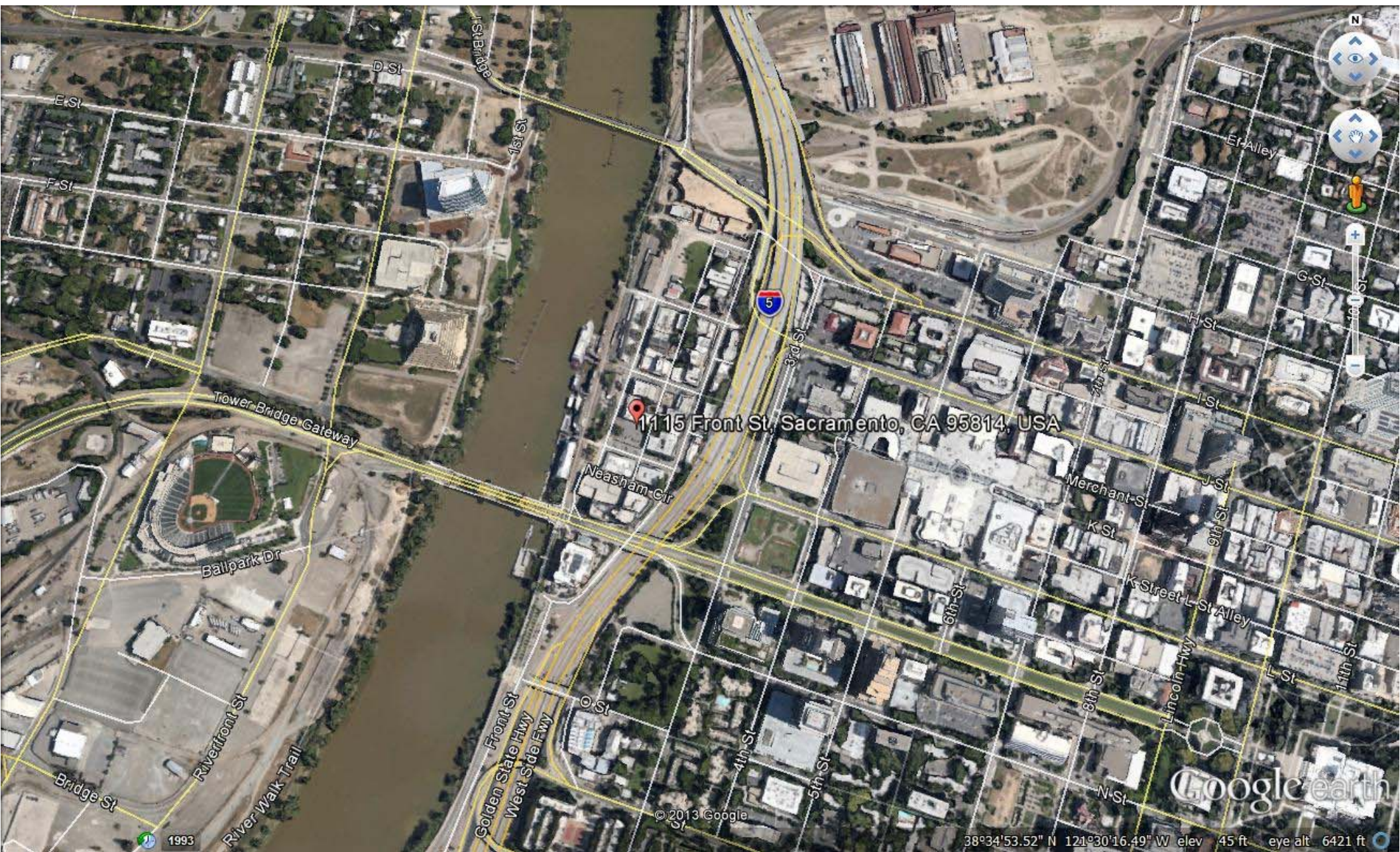
Meson Restaurant



Back Door Lounge



Our Neighbor



1115 Front St, Sacramento, CA 95814, USA

Google Earth

© 2013 Google

38°34'53.52" N 121°30'16.49" W elev 45 ft eye alt 6421 ft

1993

